

26<sup>TH</sup> ANNUAL



26<sup>TH</sup> LCI CONGRESS  
OCTOBER 22-25, 2024

# Follow through

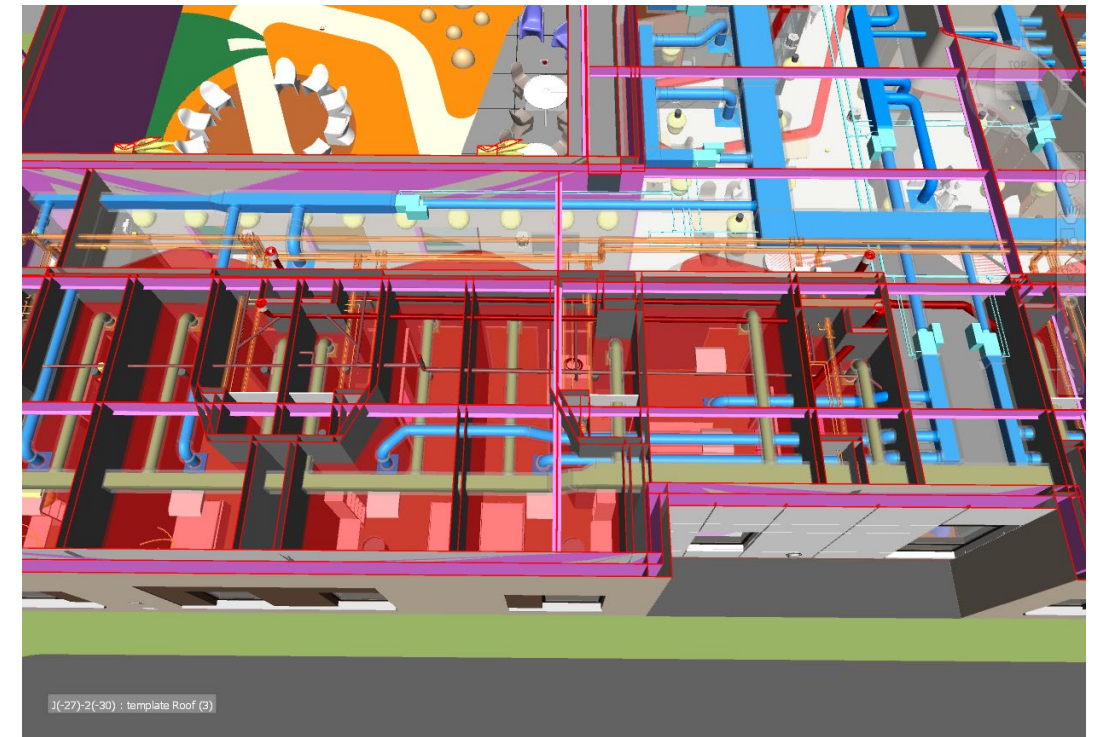
MEP verification that's actually efficient

Gautham Prasad, Senior Virtual Construction Manager,  
Messer Construction Company

**SURFING THE WAVE OF LEAN DESIGN AND CONSTRUCTION**

Thursday, October 24<sup>th</sup>, 2024

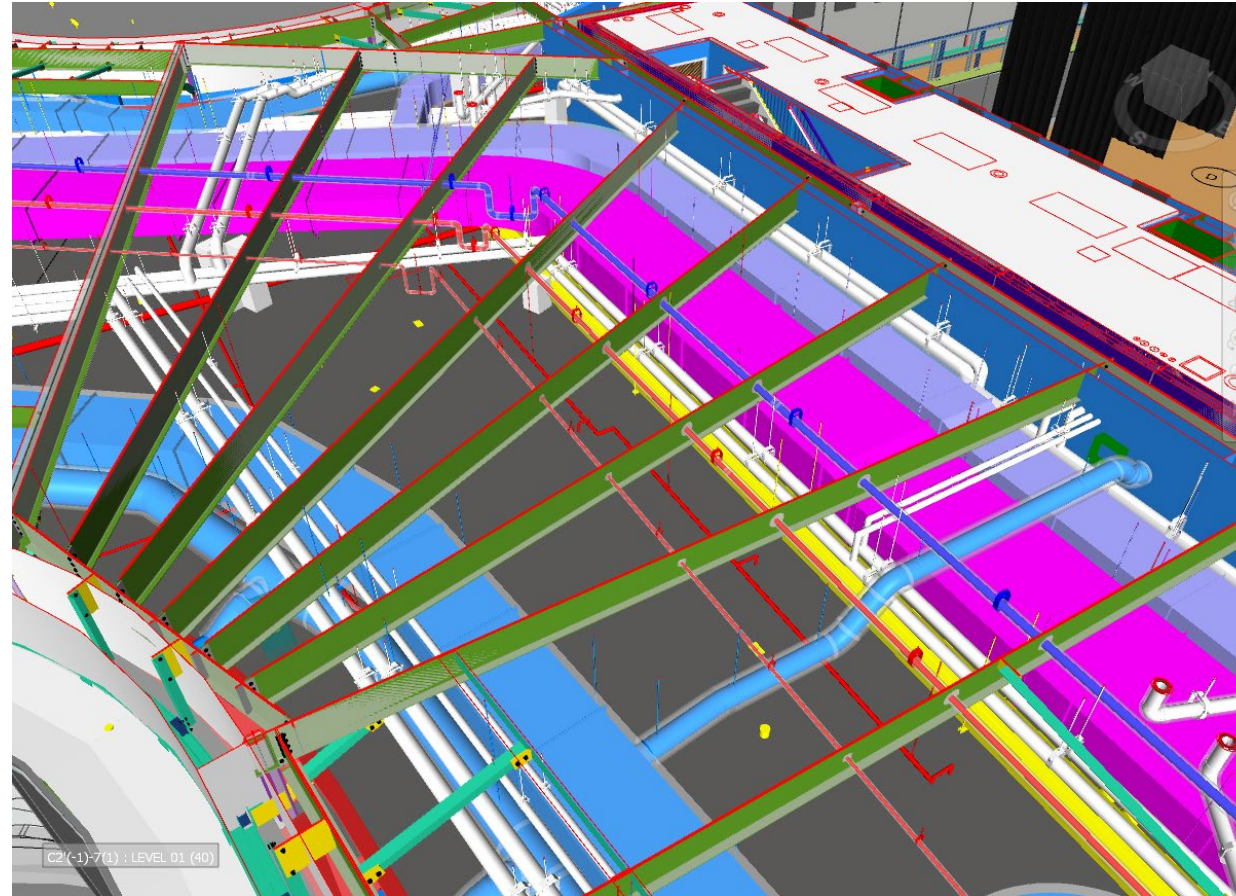
# Working with designers. . .



- Using the models during design helps us produce better CDs



# Subcontractor Coordination



- Using the models with the subcontractors allows us to exploit the power of prefabrication by coordinating MEP systems precisely

# Problem Statement

- We spend hundreds of hours auditing designs with the designers and coordinating systems with the MEP subs, but. . .
  - Subs will sometimes make field adjustments for the sake of convenience.
  - Foremen don't always follow the drawings.
  - One system installed incorrectly creates a chain of events



*"I'm starting to think our math might be off."*



# Follow Through

- MEP verification needs to be easier and accessible with your boots on the ground.



# How did this impact the field?

- *Accountability*
  - When things go wrong in the field, we often look for the fastest solution so we can keep moving. Bringing the model to the field lets us determine who is at fault so we can hold subs accountable.
- *Thinking on the Fly*
  - In the case of an unforeseen field condition, bringing the model to the field lets us find a solution immediately that does not negatively impact future trades.
- *Reference*
  - Superintendents benefit from easy access to the model. You do not need wifi or a data plan. The model is downloaded to your iPad.
- *Did we improve safety?*
  - Preventing rework directly improves safety. If we can limit the number of times a worker has to get up on a ladder to fix a problem, we reduce their overall exposure to risk.
- *What were the big wins?*
  - We are moving towards a BIM-enabled workforce.
- *S.E.E.: Safety, Efficiency, Effectiveness*

# How can you apply this tomorrow?

- *Trimble Connect AR*
  - Only interfaces directly with Trimble Connect
- *Gamma AR*
  - Interfaces with ACC BUILD and Procore
- *Revizto*
  - Interfaces with ACC BUILD and Procore



# How can you apply this tomorrow?

- *Work in lockstep with your VDC team. QR code placement needs to be adjusted periodically. Stay on top of your construction schedule to get the most out of this tool.*







26<sup>TH</sup> LCI CONGRESS  
OCTOBER 22-25, 2024



In the spirit of continuous improvement, we would like to remind you to complete this session's survey! We look forward to receiving your feedback.

# Contact Us

**Gautham Prasad**

Messer Construction Company

[gprasad@messer.com](mailto:gprasad@messer.com)







26<sup>TH</sup> LCI CONGRESS  
OCTOBER 22-25, 2024

Thank you for attending this presentation. Enjoy the rest of the 26<sup>th</sup> Annual LCI Congress!