

25<sup>TH</sup> ANNUAL



25<sup>TH</sup> LCI CONGRESS  
OCTOBER 24-27, 2023

# Boots on the Ground

Steve Moore  
Jennifer Lacy  
Josh Young

**ROBINS & MORTON**

**25 YEARS OF LEARNING: SUPERCHARGE YOUR LEAN JOURNEY IN THE MOTOR CITY**

INSERT PRESENTATION DATE





**Steve Moore**  
Innovation Lab Manager



**Josh Young**  
Senior Superintendent



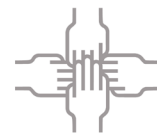
**Jennifer Lacy**  
Lean Practice Leader

# Problem Statement

Great ideas are identified frequently on project sites, but for employees without the time or resources to develop them, they rarely become something more.

**Recognizing the value lost in ideas never acted upon, Robins & Morton envisioned a way to bring those ideas to light and a place to bring them to life.**

# Building Forward®



**Collaboration**



**Continuous Improvement**



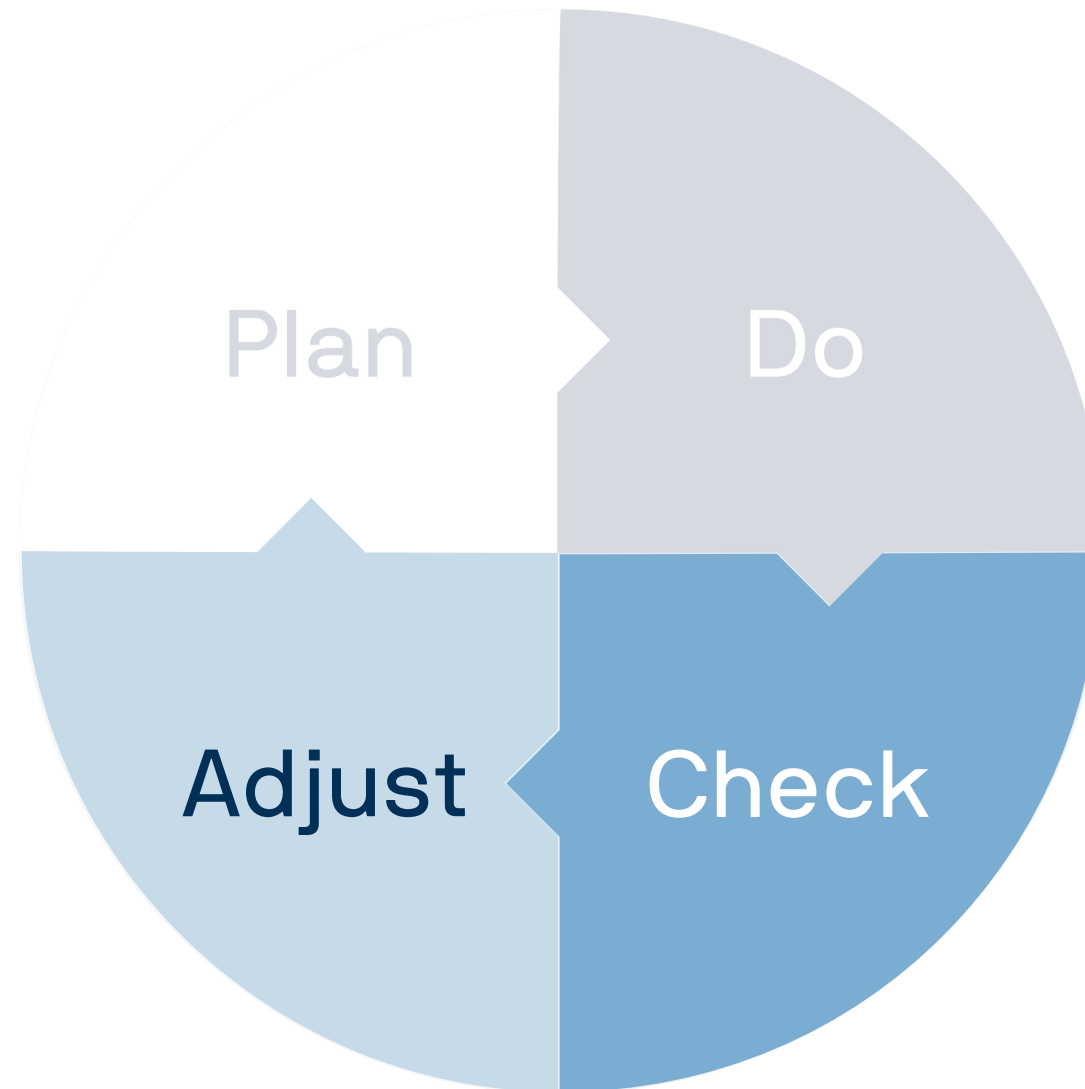
**Learning Culture**



**Leadership Development**



# The Cornerstone of Innovation



# Evolution of Innovation services at Robins & Morton



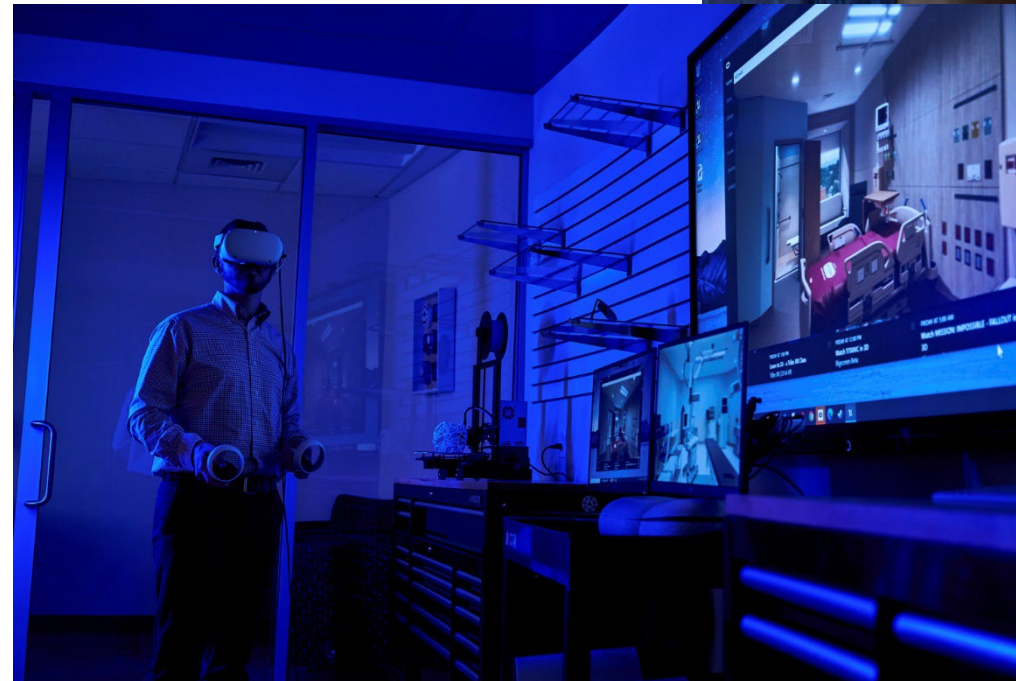


# Origin of innovation

- Development of industry products
- Shift to internal focus
- Creating products that solved problems for our field team members
- Led to tagline, Bring it to the Lab



*Lean Congress 2021*



*Innovation Lab*





# Bring it to the Lab ↗

**ROBINS & MORTON**



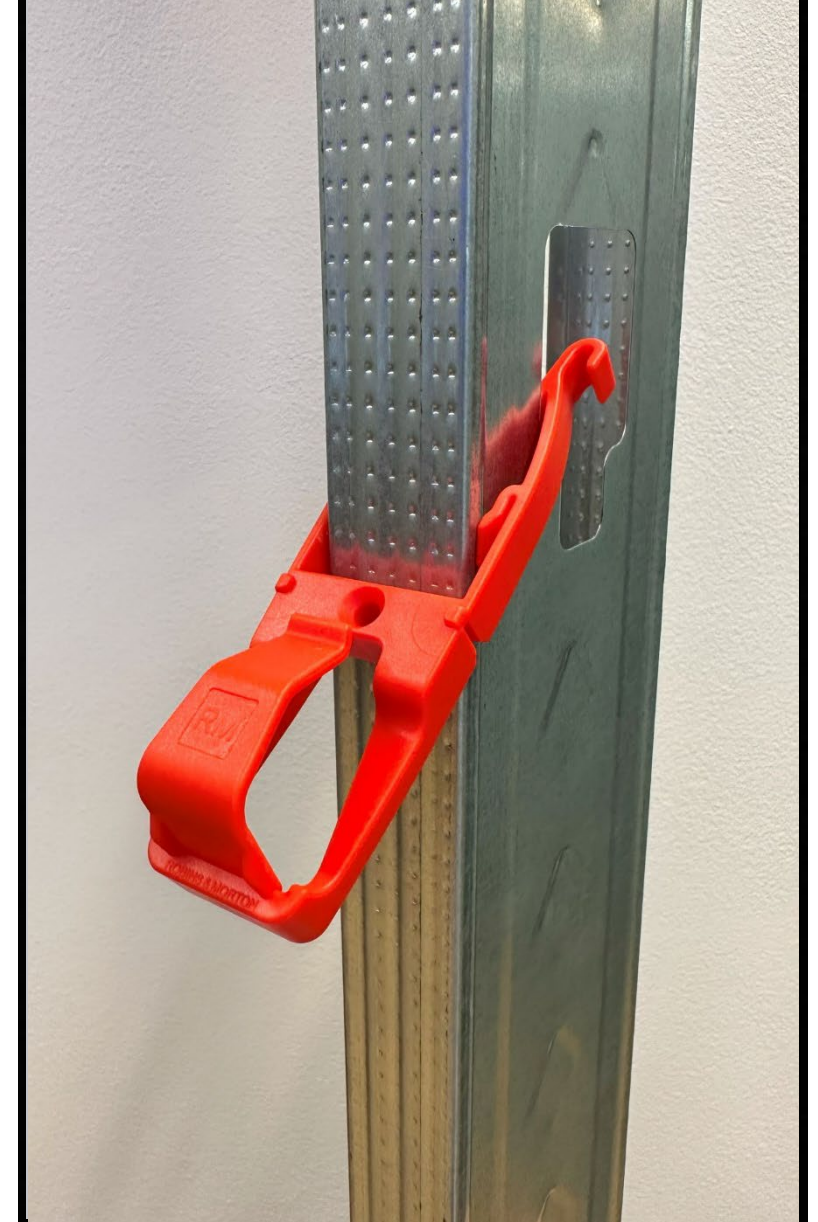


# Case Studies



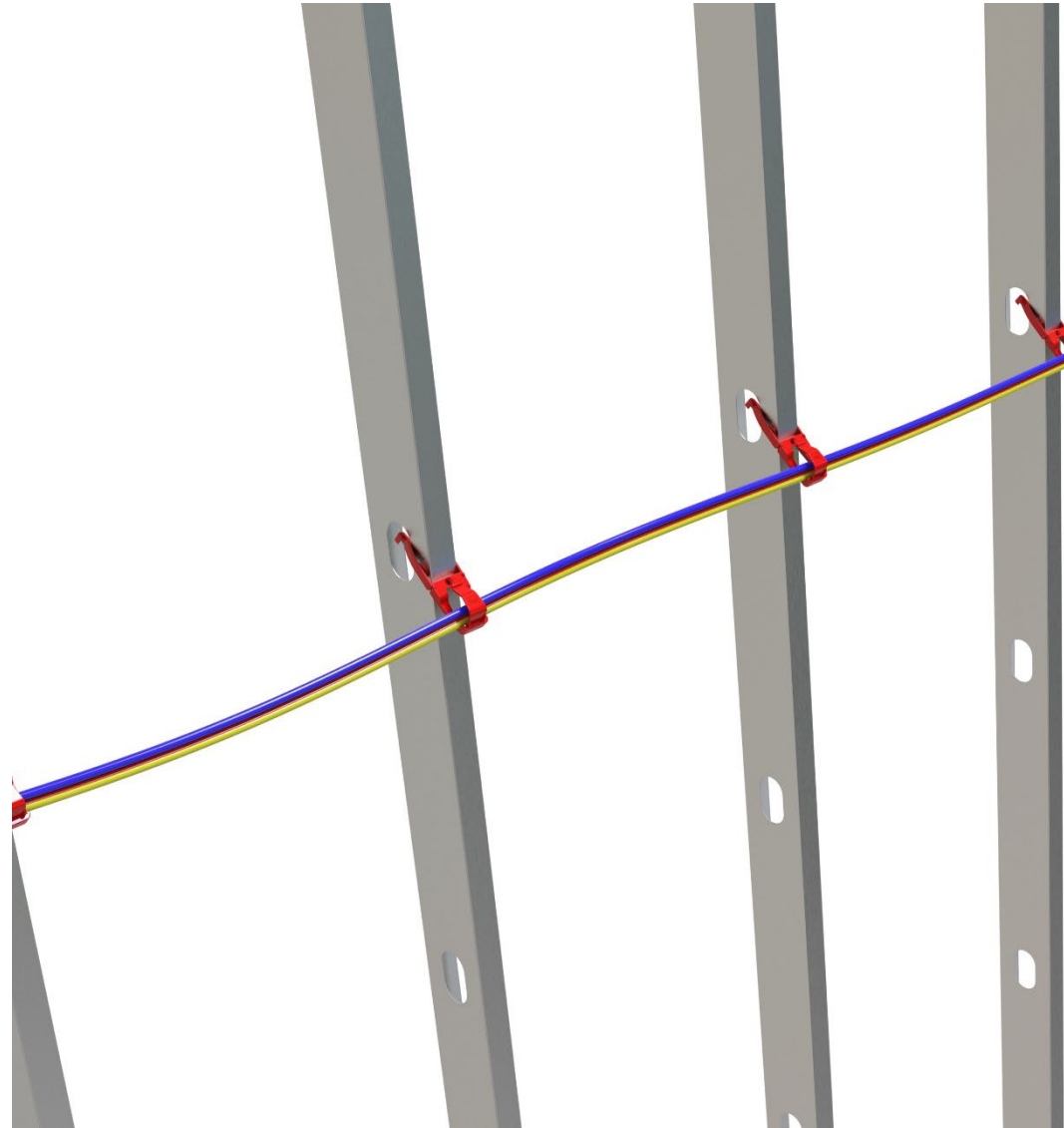


# CordClip





# CordClip





# CordClip

Before



After





# CordClip





# Corporate innovation inspires onsite innovation

# RMBB ONSITE INNOVATION LAB

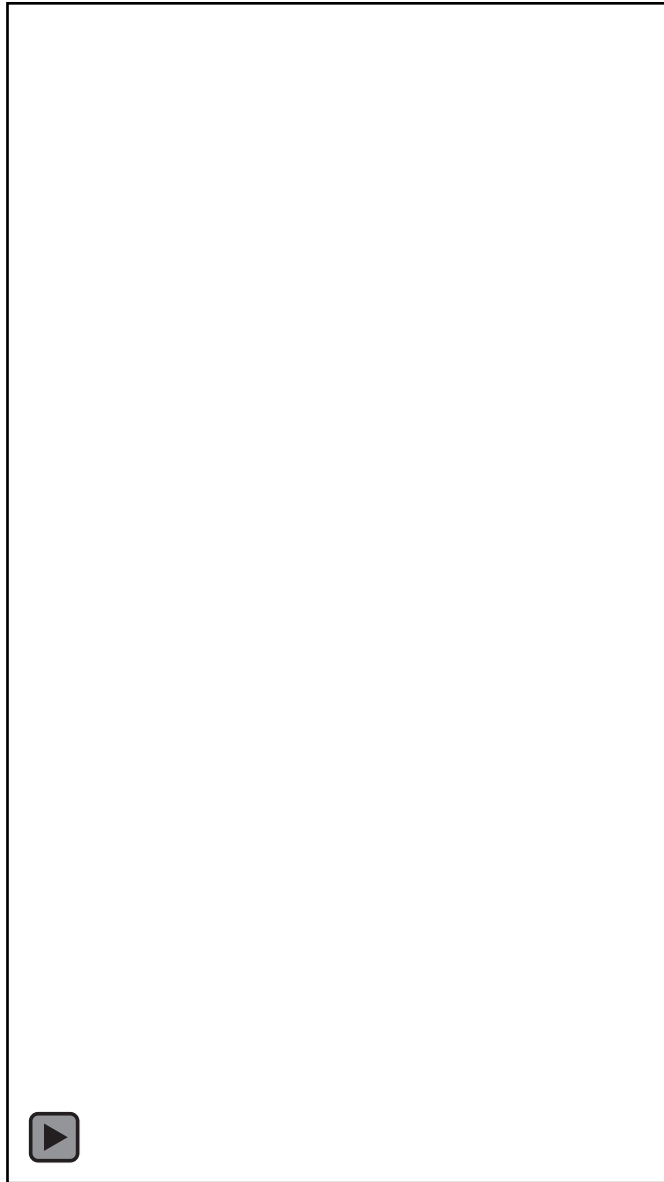
The logo for SmartFab Warehouse, featuring a stylized yellow building icon with a red roof and the text "SmartFab WAREHOUSE" in black.

An architectural rendering of a modern, multi-story industrial or commercial building with large glass windows and a curved driveway. The building is surrounded by landscaping and a parking area. The name "ROBINS & MORTON" is visible on the building's facade.

INNOVATION IS  
ESSENTIAL FOR  
IMPROVING  
EFFICIENCY AND  
OUTCOMES

The logo for Robins & Morton Branch Builds, featuring a red box with "ROBINS & MORTON" in white, and a green box with "BRANCH BUILDS" in white.

# Temporary Walls





# PrismPoint



# Fire Damper Reset



**Steve Moore**

Nov 29, 2022 • @1

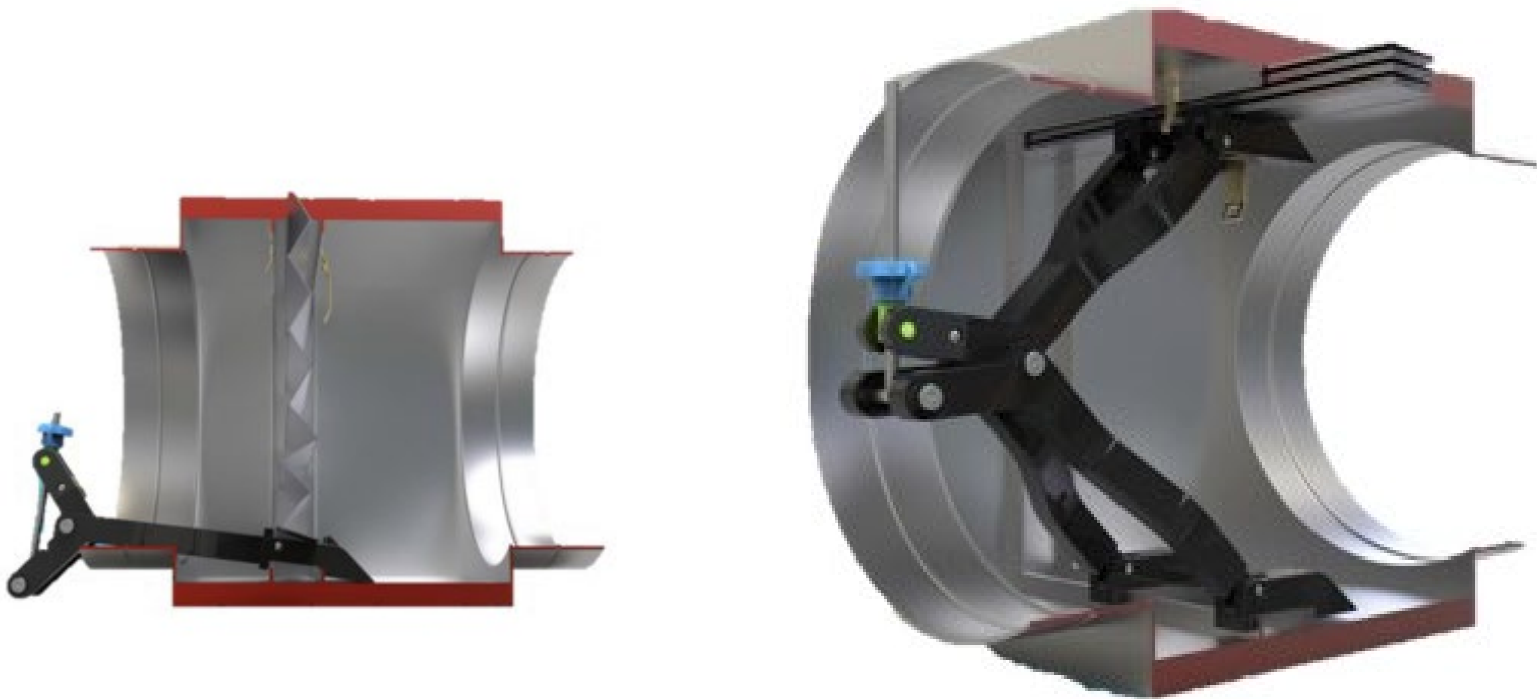
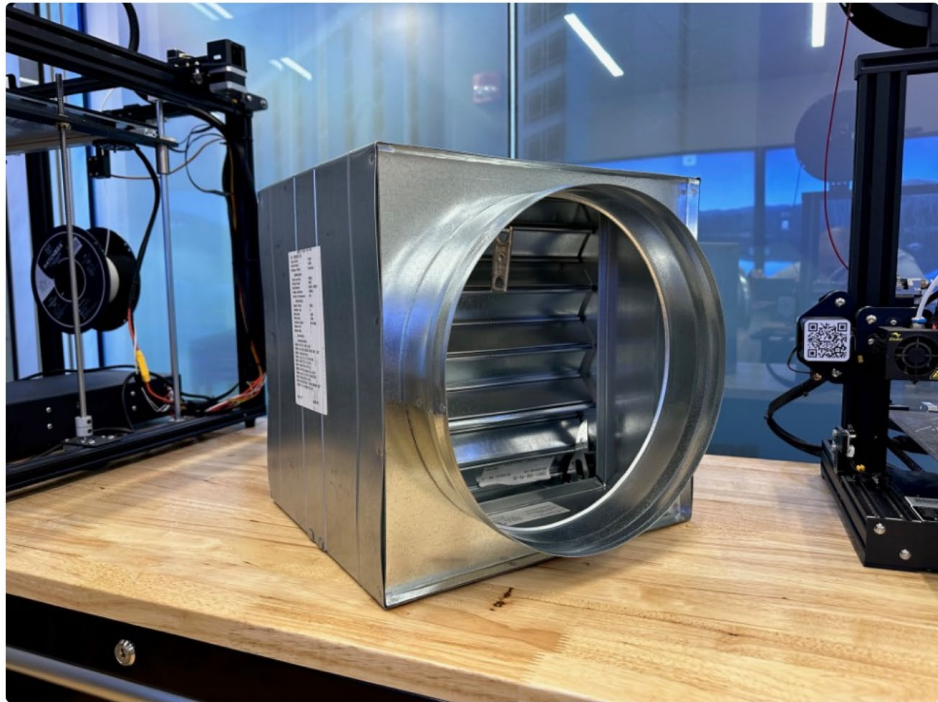
Seen by 317 ...

It was an honor to join the BF Spotlight call yesterday to discuss innovation. I'm inspired by many of your creative ideas and love to support you in these efforts.

I'd like to brainstorm various ideas with all of you, one at a time, starting with fire dampers. [Bryan Ward](#)'s desire to find a better way to reset fire dampers seemed to resonate. I'm currently prototyping and testing a few ideas, with the aim to be able to trigger and reset fire dampers with one hand. I would love to hear what has worked well for you, what issues you have had, or what you think I should try next.

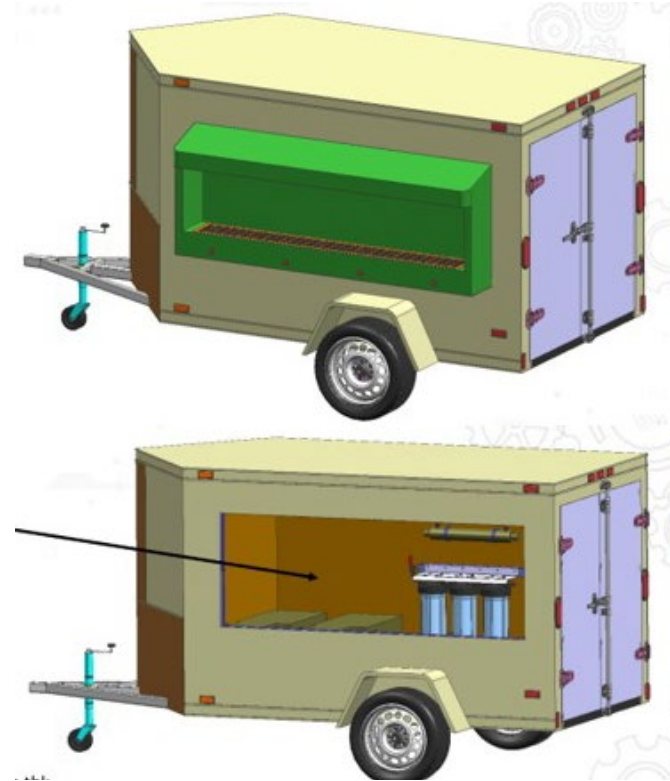
Here is a photo of the 12" fire damper sitting in the innovation lab. I know what Bryan means by "reaching your hand into a guillotine"! Haha.

#Innovation

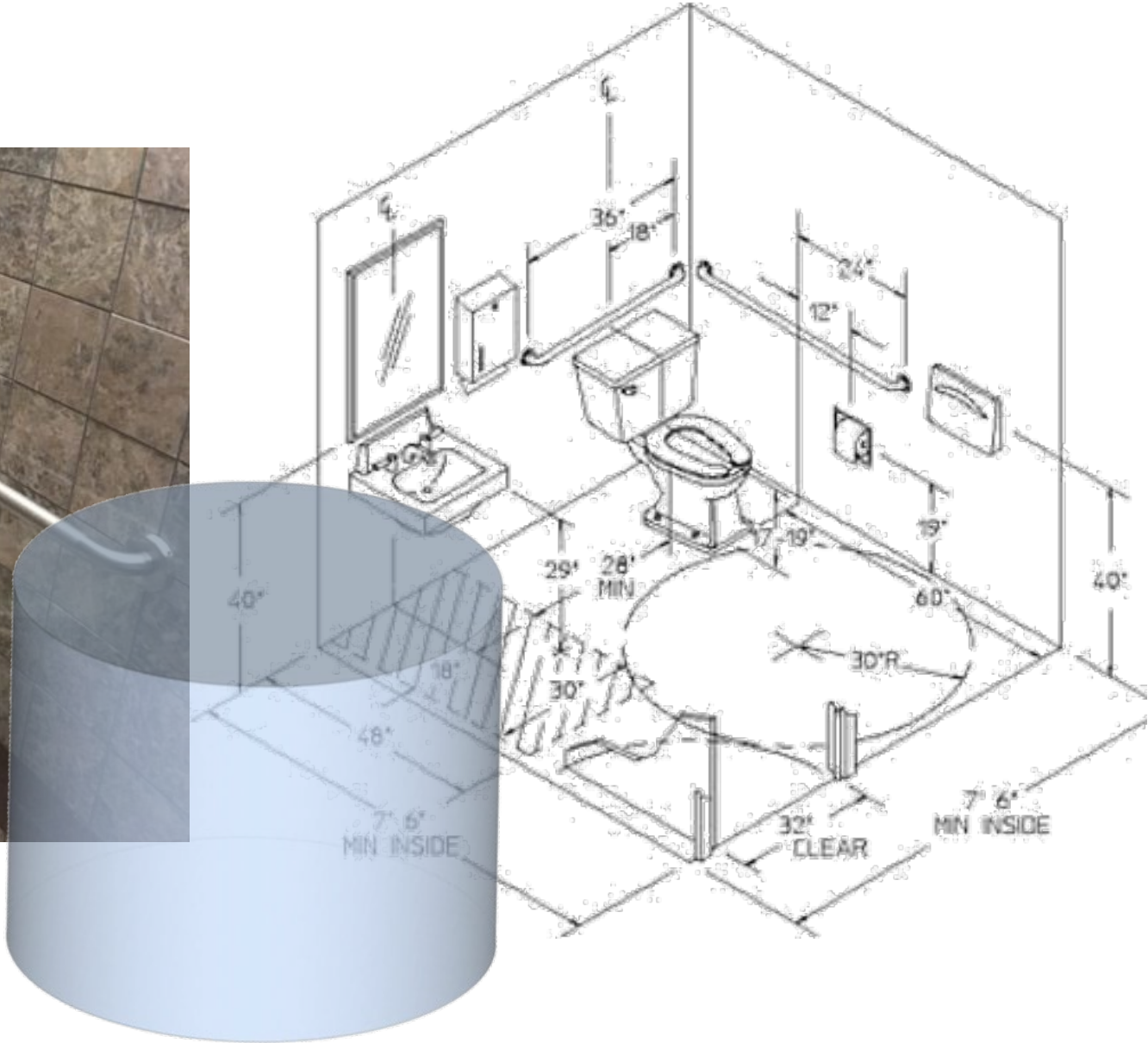
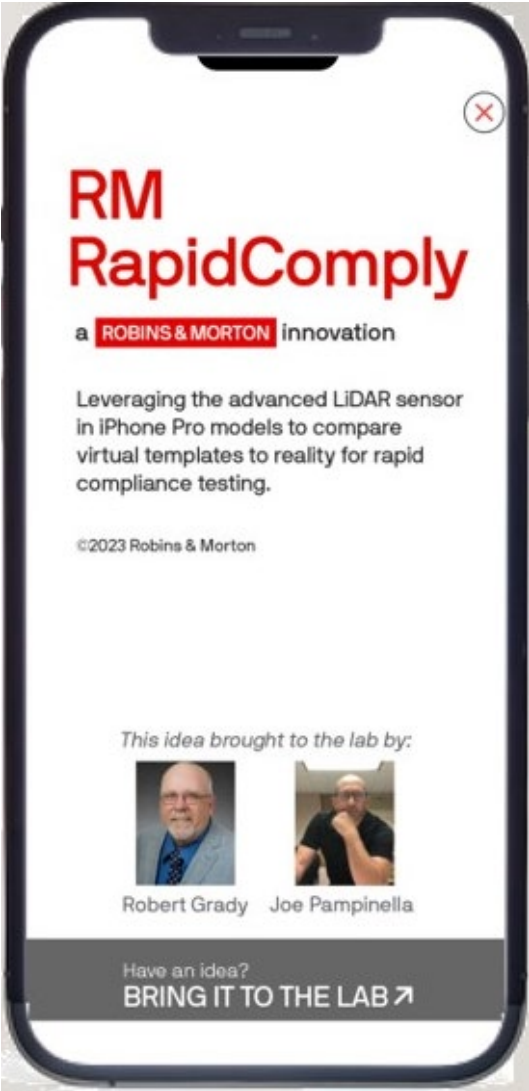




# Water Bottle Refill Station



# RapidComply





# Mud Ring Covers





### 3D PRINTING

Can I 3D print my model before I build it? Yes, you can. 3D printing is a game-changer for construction. It allows you to create physical models of complex parts, reducing errors and saving time. It's perfect for testing fit and function before full-scale production.

### REALISTIC ANIMATIONS

Can I see my model before I build it? Yes, you can. Realistic animations provide a visual representation of the construction process, helping to identify potential issues and plan more effectively. They are invaluable for communication and project management.

### REALISTIC VR

Can I see my model before I build it? Yes, you can. Realistic VR allows you to experience the construction site in a virtual environment. This helps in understanding the spatial relationships and challenges of the project, leading to better decision-making.

### PRISMPPOINT

Can I see my model before I build it? Yes, you can. PRISMPPOINT is a powerful tool for creating detailed 3D models of building components. It enables precise coordination and visualization of the construction process.

### BIM COORDINATION

Can I see my model before I build it? Yes, you can. BIM coordination involves integrating different building information models to ensure that all systems work together seamlessly. This reduces conflicts and improves the overall quality of the construction.

### SMARTRAC

Can I see my model before I build it? Yes, you can. SMARTRAC is a software platform designed for construction management. It offers a comprehensive suite of tools for tracking progress, managing resources, and communicating with the team.

### SAFETY DIGITAL TASK PLAN

Can I see my model before I build it? Yes, you can. Safety digital task plans are essential for ensuring that all workers are aware of the risks and procedures for each task. They provide a clear, standardized way to communicate safety information.

### HP SITEPRINT

Can I see my model before I build it? Yes, you can. HP Siteprint is a mobile application for capturing and managing site data. It allows users to take photos, add notes, and track changes in real-time, improving data accuracy and accessibility.

### WASTE CART DUMPER

Can I see my model before I build it? Yes, you can. Waste cart dumpers are used to efficiently remove waste from construction sites. They are designed to be easy to use and maintain, ensuring a clean and safe work environment.

### FIRE DAMPER RESET TOOL

Can I see my model before I build it? Yes, you can. Fire damper reset tools are used to safely and effectively reset fire dampers after they have been closed. They are a critical component of fire safety equipment.

### DRONES

Can I see my model before I build it? Yes, you can. Drones provide a unique perspective on the construction site, allowing for detailed inspections and mapping. They can capture high-resolution images and videos, providing valuable data for project analysis.

### RM RapidComply

Can I see my model before I build it? Yes, you can. RM RapidComply is a software tool for managing compliance and safety. It helps organizations ensure they are meeting all relevant regulations and standards, reducing the risk of non-compliance.

### CORDCLIP

Can I see my model before I build it? Yes, you can. Cord clips are small but essential tools for organizing and securing cables. They help prevent tripping hazards and keep work areas tidy and safe.

### MUDHOLE COVERS

Can I see my model before I build it? Yes, you can. Mudhole covers are used to safely close off mudholes during construction. They are designed to be durable and easy to install, ensuring the safety of workers and the public.

### WATER BOTTLE ELIMINATION

Can I see my model before I build it? Yes, you can. Water bottle elimination devices are used to prevent water bottles from becoming litter. They provide a designated area for recycling or disposal, promoting a cleaner and safer site.

### LASER SCANNING

Can I see my model before I build it? Yes, you can. Laser scanning is a highly accurate method for capturing the geometry of a building or site. It creates a detailed 3D point cloud that can be used for various purposes, including design and analysis.

### 360 PHOTO DOCUMENTATION

Can I see my model before I build it? Yes, you can. 360-degree photo documentation provides a complete visual record of a construction site. It allows stakeholders to view the site from any angle, improving transparency and communication.

### ROBOTICS

Can I see my model before I build it? Yes, you can. Robotics is revolutionizing construction by automating repetitive and dangerous tasks. Robots can improve efficiency, reduce costs, and enhance the safety of the workforce.

### 4D SCHEDULING

Can I see my model before I build it? Yes, you can. 4D scheduling combines 3D modeling with project scheduling. It allows users to visualize the construction process over time, helping to optimize resource allocation and project timelines.

### ROBOTIC LAYOUT

Can I see my model before I build it? Yes, you can. Robotic layout systems use precision robotics to mark out construction sites. They ensure that all measurements are accurate and consistent, leading to better construction results.



# Innovation Awards

**ROBINS & MORTON**

# Innovation Awards



# Innovation Awards



COMPANY-WIDE VIRTUAL  
EVENT



FEATURING **YOUR**  
INNOVATIONS



LIVE VOTING, REAL-TIME  
RESULTS



AWARDS FOR BEST  
INNOVATIONS



# Innovation and Lean

- Don't let your fear of falling keep you from trying
- Create a safe fall/fail zone
- Create momentum for true continuous improvement



# Sharing Successes

BUILDING FORWARD® VALUE TO OUR CLIENTS

<p><b>Joe Pritchard</b> Project Manager – Construction Carilion Clinic</p>	<p><b>Marshall Scott</b> Project Director Carilion Clinic and King's Daughters Medical Center</p>	<p><b>Larry Caines</b> Executive Director – Facilities Operations &amp; Environment of Care King's Daughters Medical Center</p>	<p><b>Noah Ballasch</b> Assistant Project Manager King's Daughters Medical Center</p>	<p><b>Katy Klaproth</b> Vice President of Marketing and Communications</p>
--	---	---	---	--

7 ROBINS & MORTON

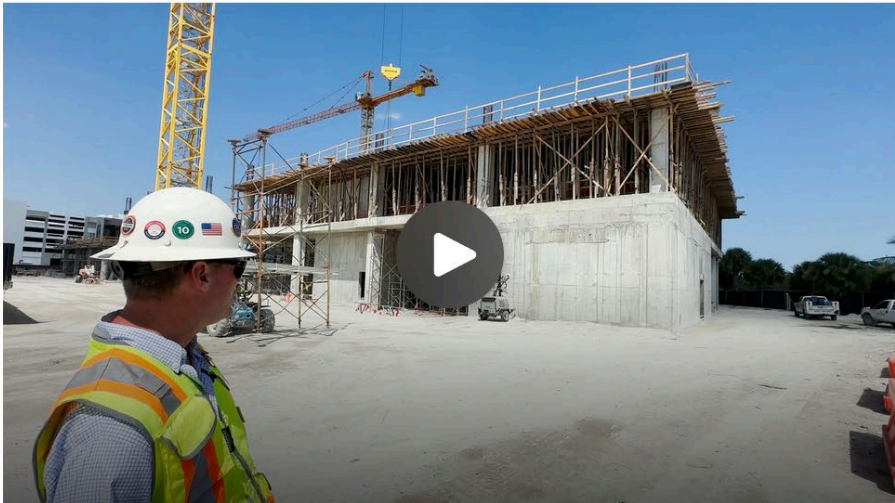
BUILDING FORWARD

Posted in All Company

**Steve Moore**  
Sep 20 • @2

Seen by 527 ...

Building a high-end hospital on a landfill!?! Take a virtual job walk of the Sole Mia Project with [Noah Johnston](#). In just three minutes, you will see a recap of some great innovation that he showed me when I visited last week. I travel to a lot of projects and decided to start sharing these valuable job walks with the company. (thank you [Ashley Theodore](#) for the video editing)



Like Comment Share ▾

Wadne Dexaus and 38 others

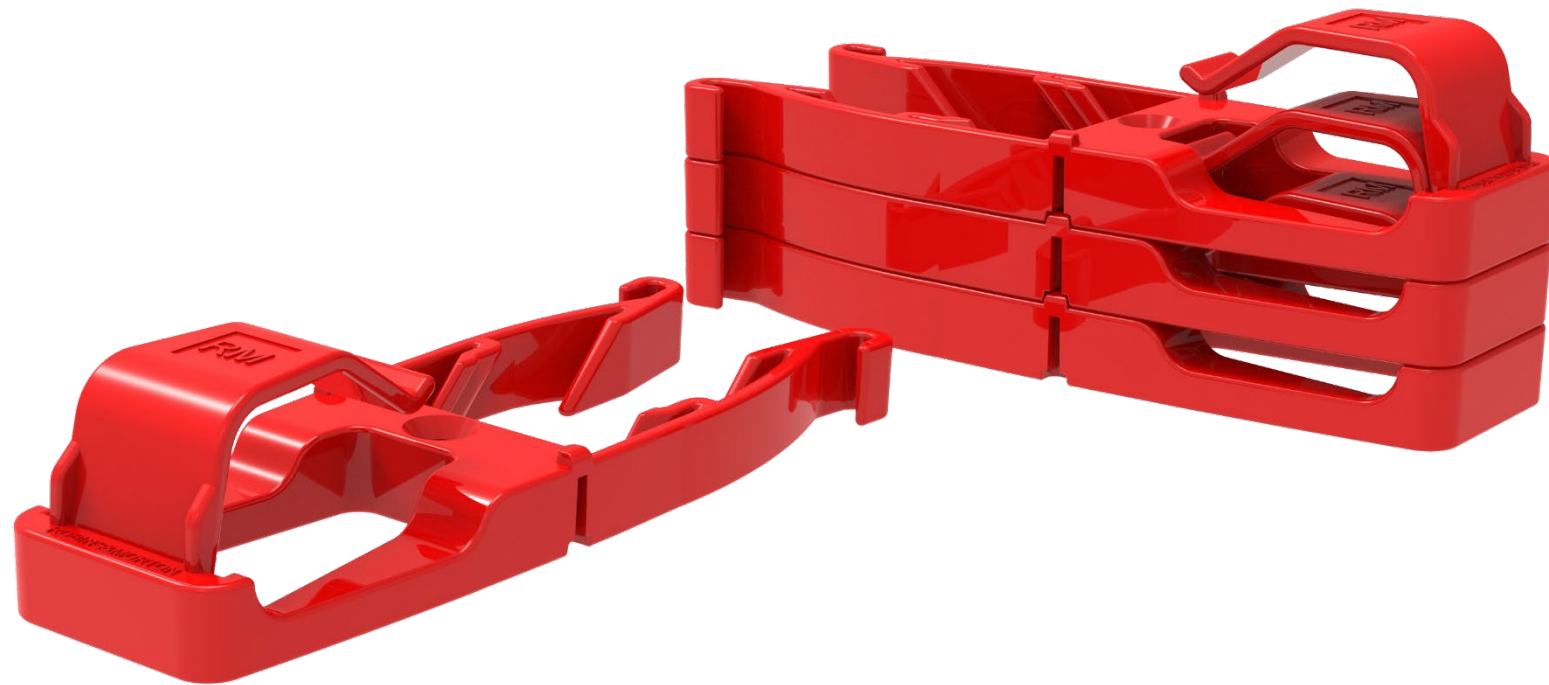
Show 4 previous comments

**Jennifer Lacy** Yesterday at 3:58 PM  
Love this approach to sharing [Steve Moore](#)  
[#ourBFwin](#)





# CordClip Availability



Order online at [ersstore.com](https://ersstore.com)  
(account creation required).



# Contact Us

**Steve Moore**

Robins & Morton

[stevenm@robinsmorton.com](mailto:stevenm@robinsmorton.com)

**Josh Young**

Robins & Morton

[jyoung@robinsmorton.com](mailto:jyoung@robinsmorton.com)

**Jennifer Lacy**

Robins & Morton

[jlacy@robinsmorton.com](mailto:jlacy@robinsmorton.com)







25<sup>TH</sup> LCI CONGRESS  
OCTOBER 24-27, 2023



**In the spirit of continuous improvement, we would like to remind you to complete this session's survey! We look forward to receiving your feedback.**





25<sup>TH</sup> LCI CONGRESS  
OCTOBER 24-27, 2023

Thank you for attending this presentation. Enjoy the rest of the 25<sup>th</sup> Annual LCI Congress!