

25<sup>TH</sup> ANNUAL



25<sup>TH</sup> LCI CONGRESS  
OCTOBER 24-27, 2023

# STCKY (Stuff that can kill you)

Troy Ogden, Josh White, Brasfield & Gorrie

**25 YEARS OF LEARNING: SUPERCHARGE YOUR LEAN JOURNEY IN THE MOTOR CITY**

October 26, 2023



## **PURPOSE**

Building exceptional people, trusting relationships, great projects, and strong communities

## **VALUES**

Safety  
Performance  
Integrity  
Respect  
Innovation  
Teamwork

## **FOUNDATION**

Our legacy is built on honoring commitments and living by the Golden Rule

# **STCKY (Stuff that can kill you)**

Troy Ogden & Josh White

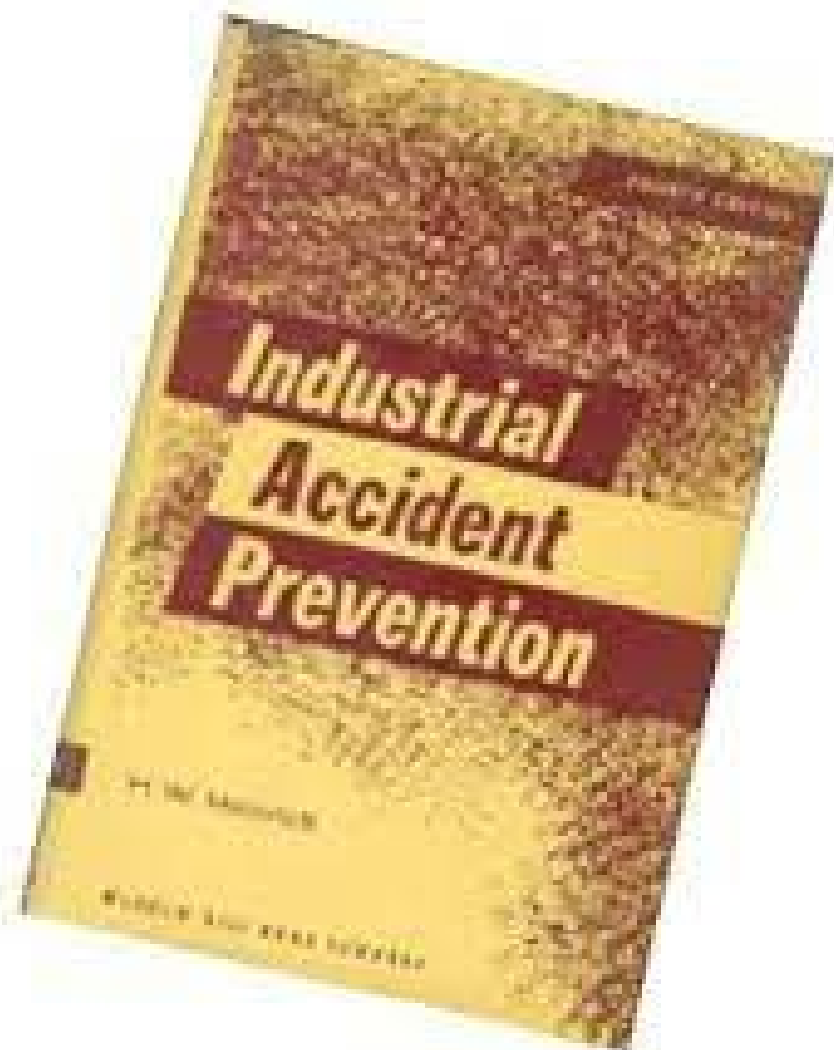


# Predicting the future.....



**is our  
favorite  
past  
time**

# Modern Safety – Heinrich Triangle



H.W. Heinrich – 1931



# Understanding the Challenge

CONSTRUCTION DIVE INVESTIGATION

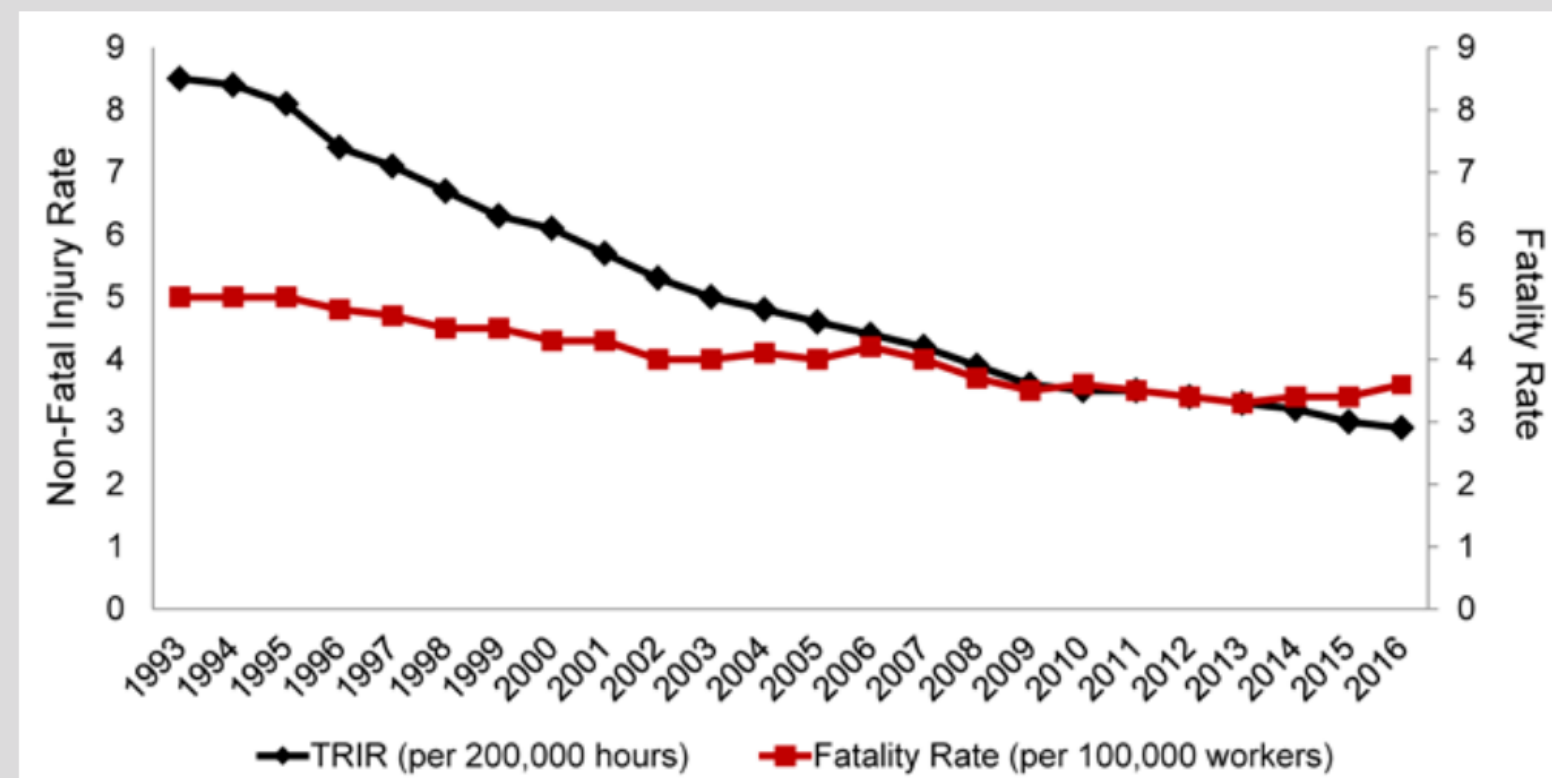
## Despite OSHA's efforts, construction's death rate hasn't budged in 10 years

Published November 3, 2022 • By [Zachary Phillips](#), [Julia Himmel](#) and Noelle Knox



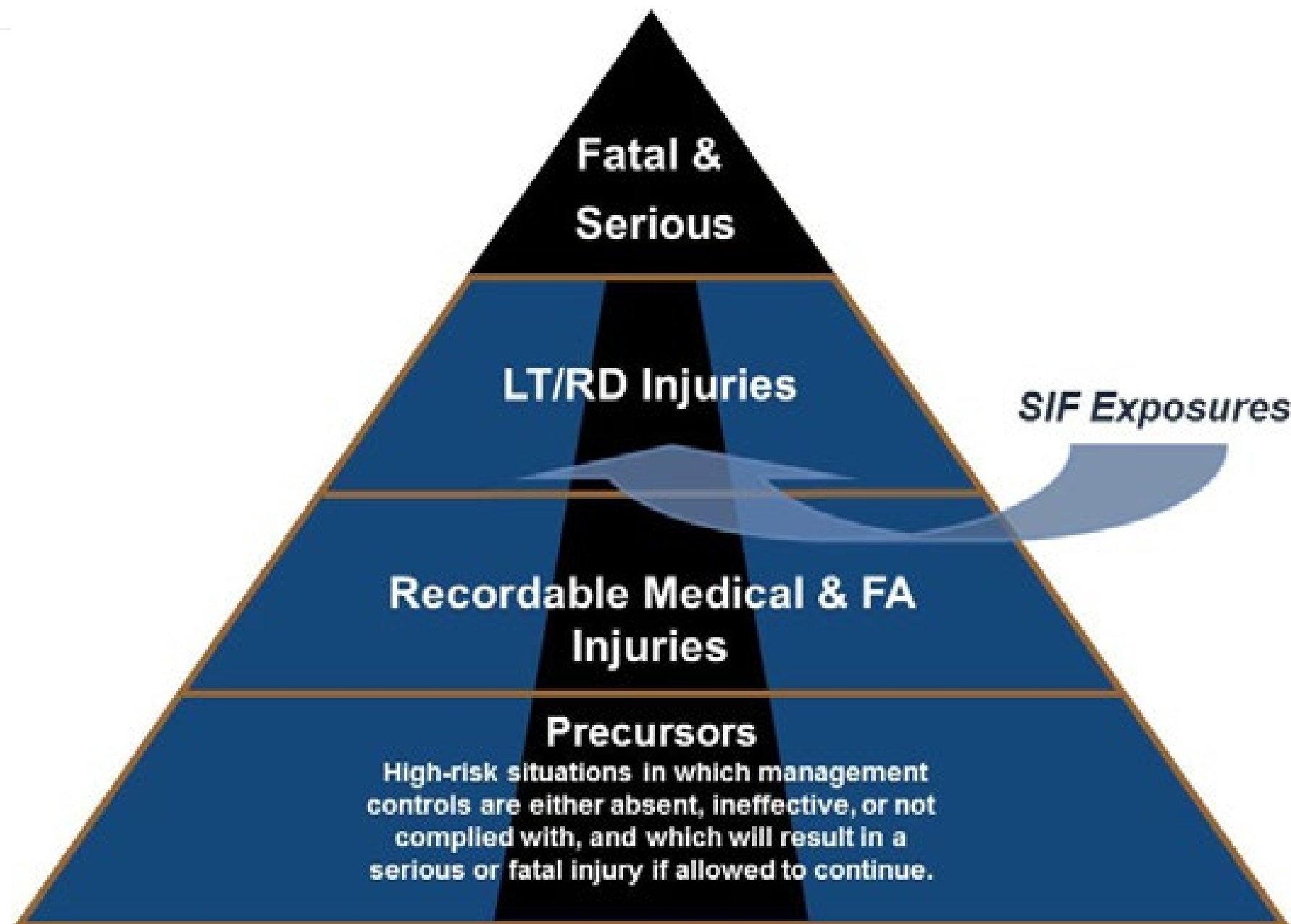
Illustration: Cathryn Virginia for Industry Dive

## FATALITY RATE VS. NONFATAL INJURY RATE



Note. Adapted from Census of Fatal Occupational Injuries Summary, 2016, by BLS, 2017.

# Serious Injury & Fatality Research





## What the research shows...

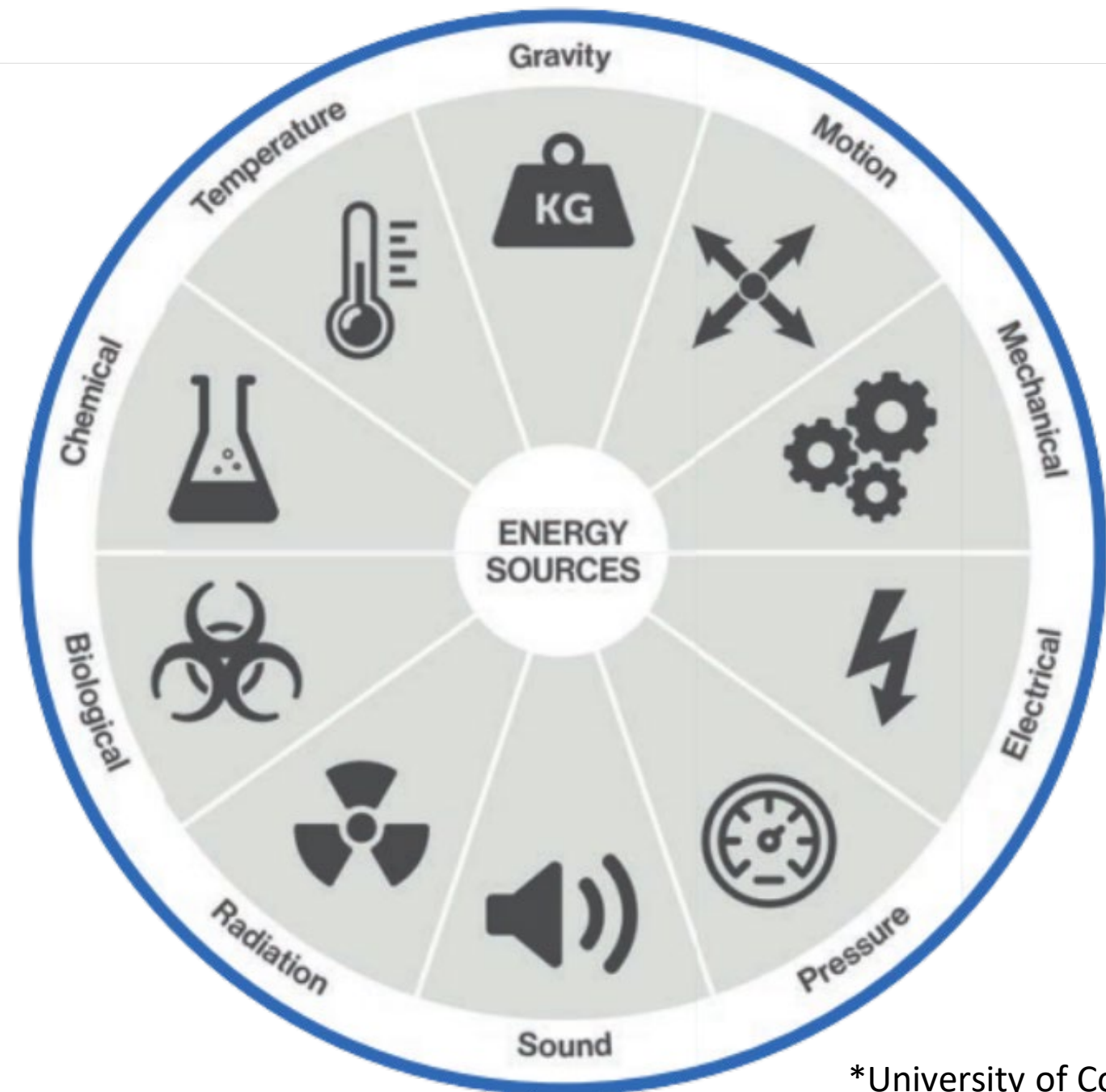
**Minor injuries  
rarely predict  
serious  
injuries....because  
the things that  
hurt people aren't  
the same things  
that kill people.**

**Fatalities are  
almost always  
the release of  
uncontrolled  
energy.**

\*Conklin



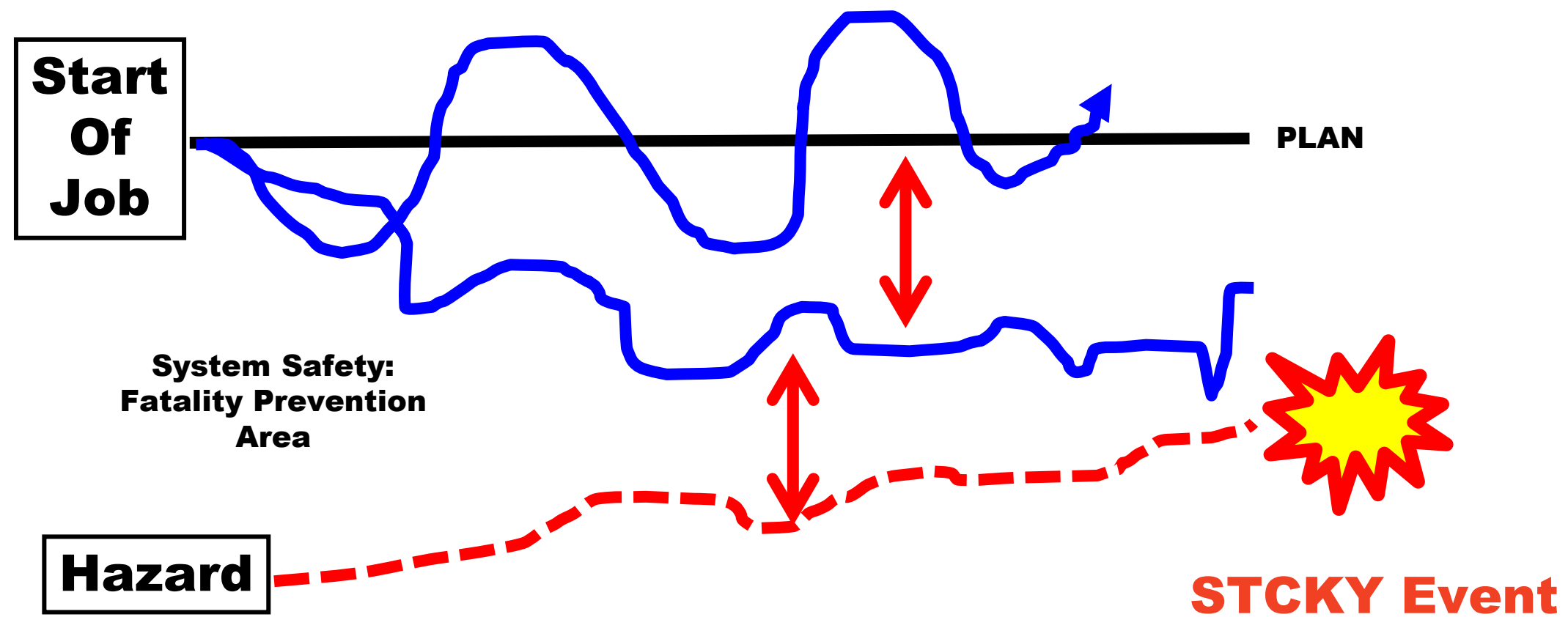
# Where and how people get seriously hurt or die....



\*University of Colorado

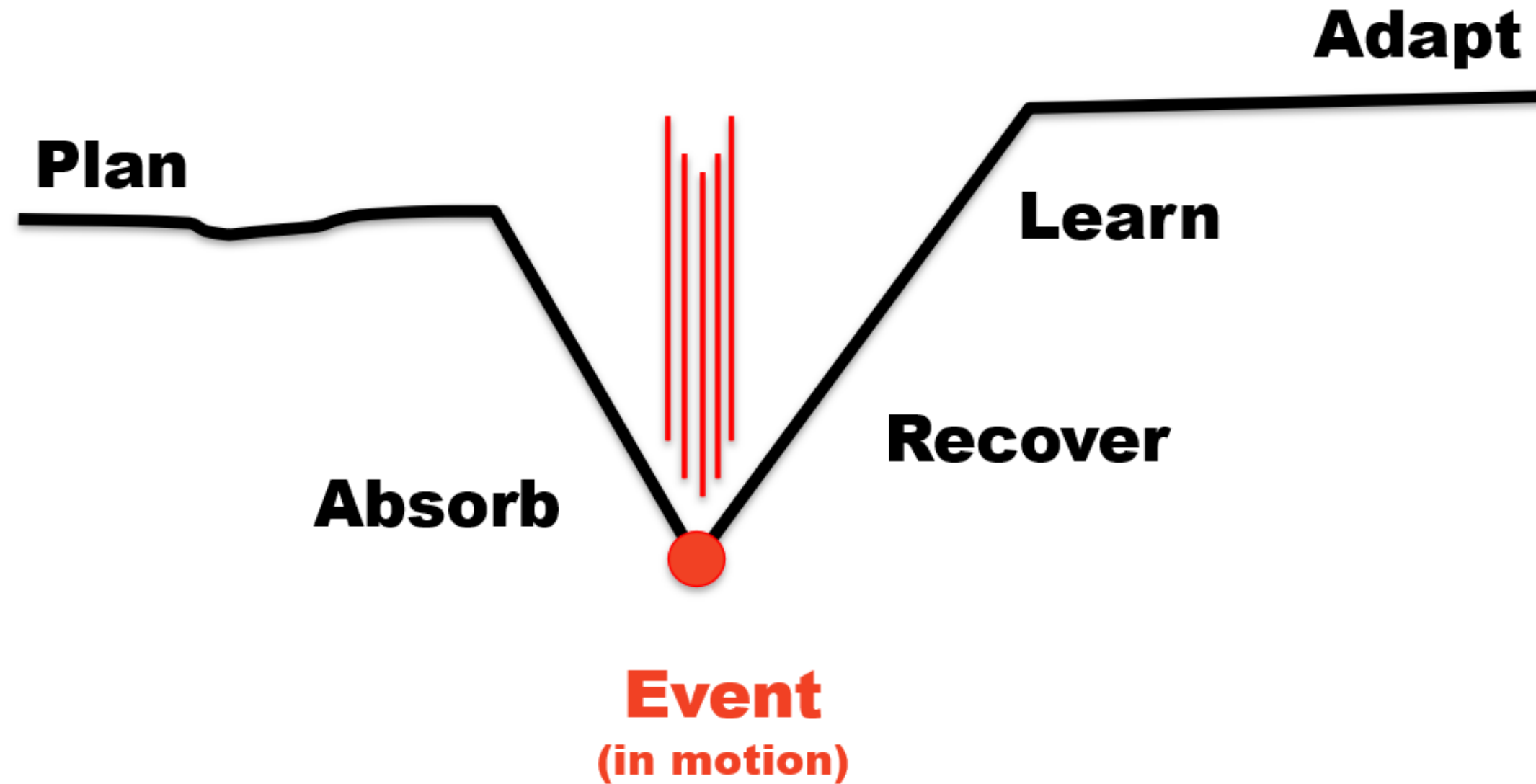


# Plan As Imagined



\*Conklin

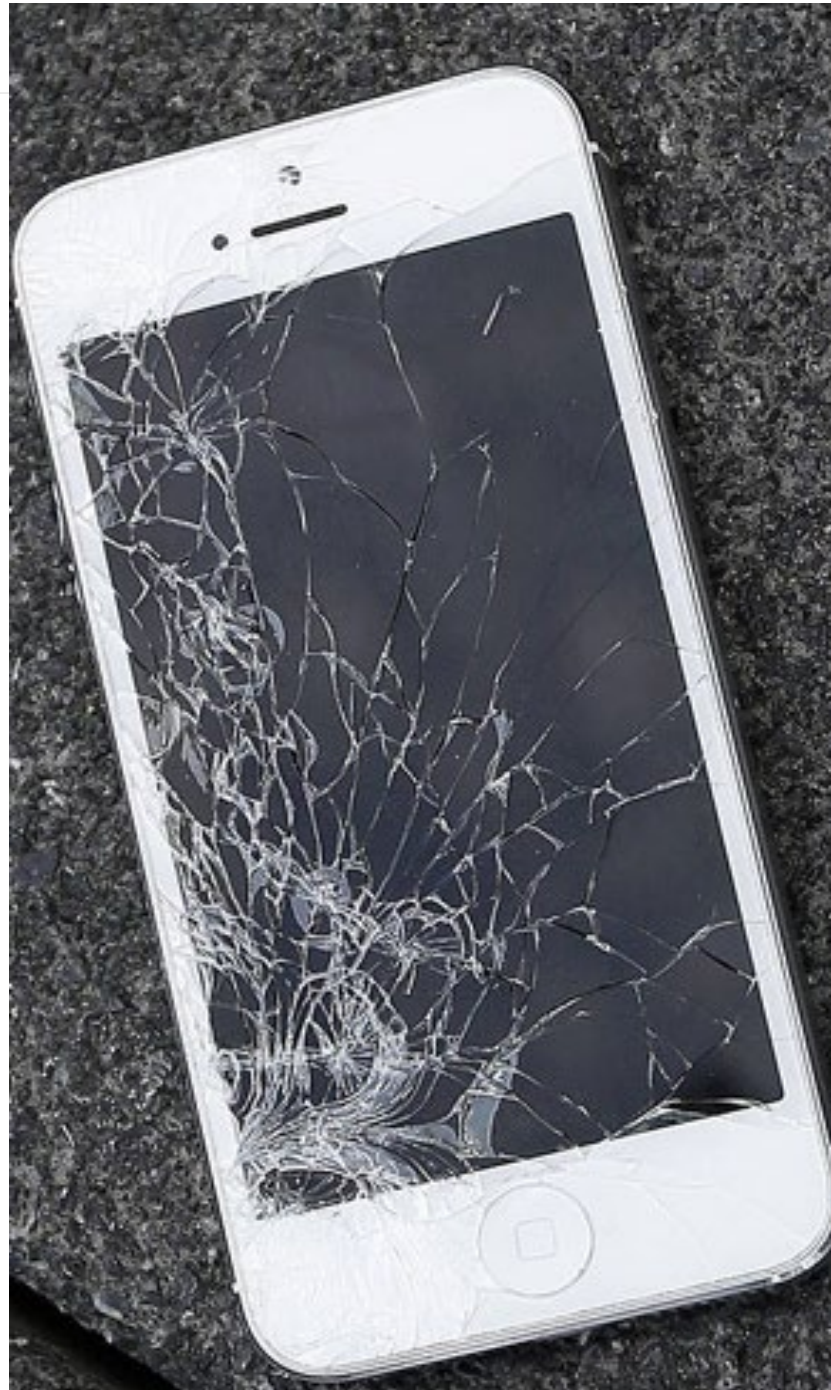
# Adding capacity to fail safely



Linkov 2013



# CAPACITY/RECOVERY Model



# The way we talk about events matter!

**We tend to investigate how the organization **failed** to prevent the event.**

**Instead, we should investigate how the organization **failed** to control the accident consequence.**

\*Conklin

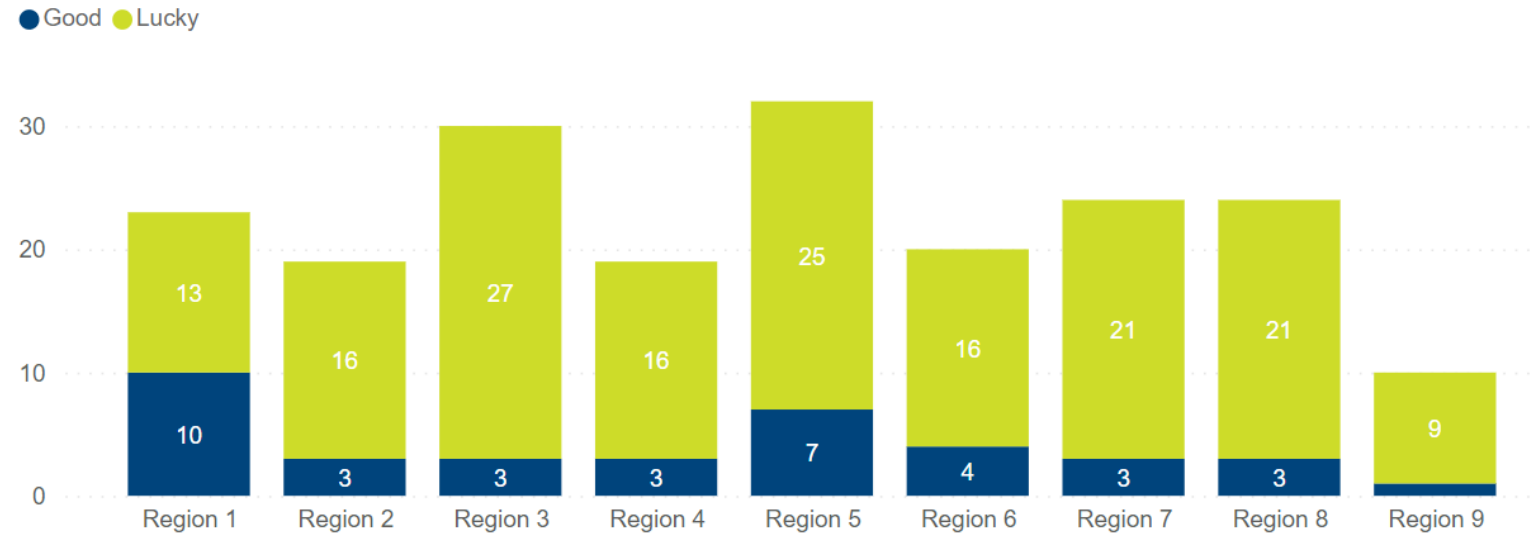




## 2023 STCKY STATS



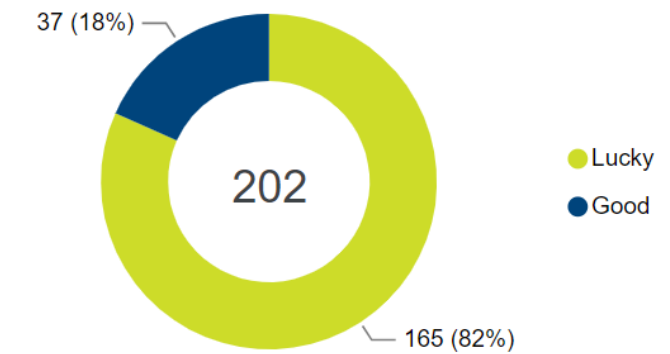
### STCKY Incidents by Region



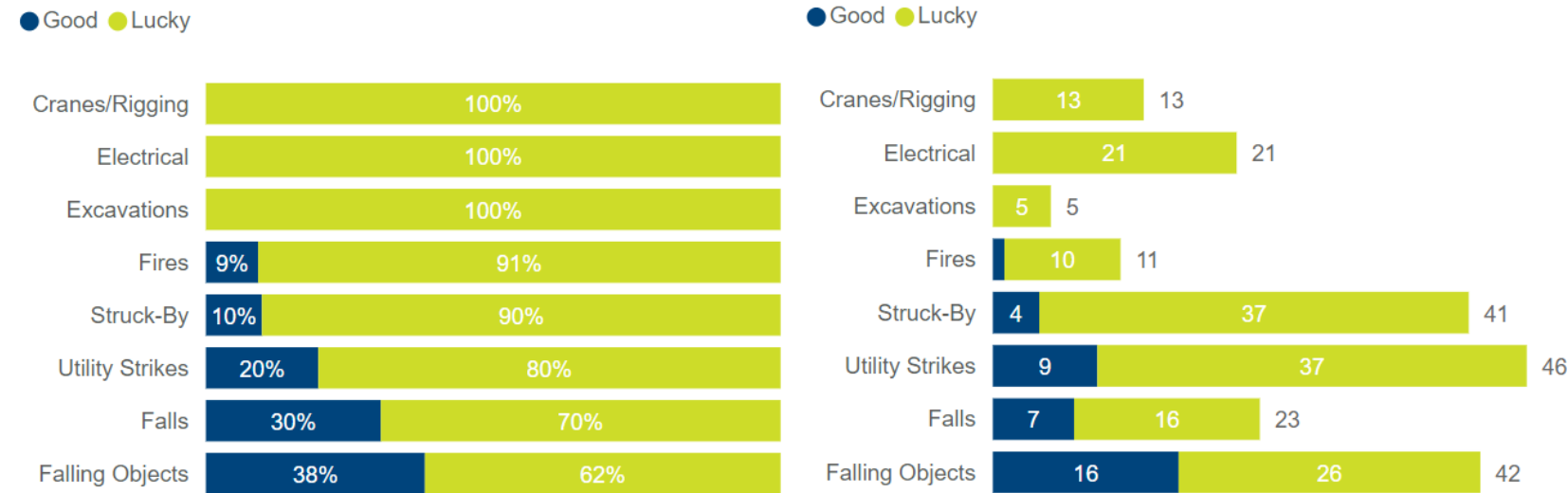
8

Lucky STCKY Incidents w/ SIIR

### Good vs Lucky STCKY Incidents



### STCKY Incidents by Category



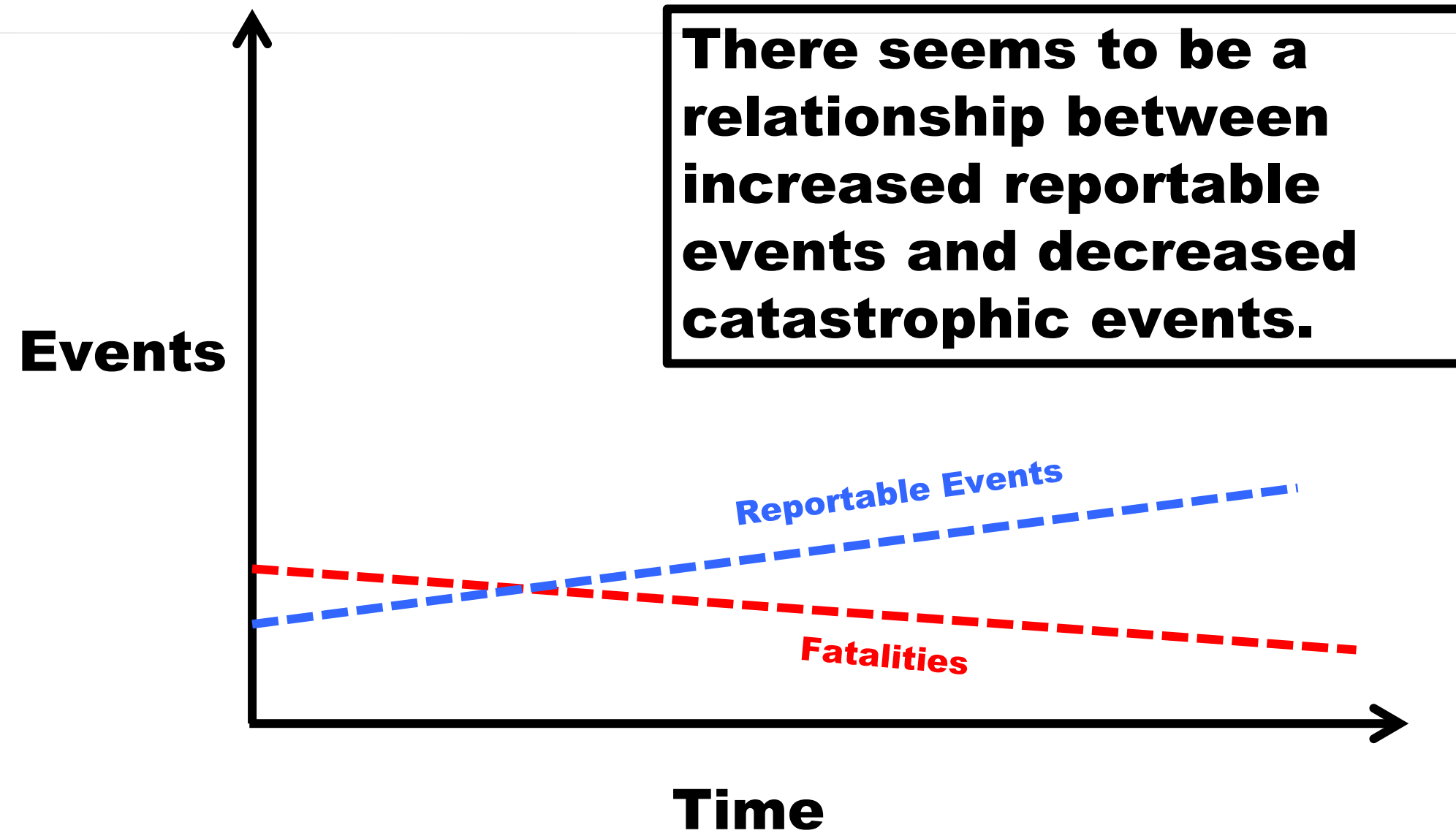
**STCKY** - Any incident that could have killed or seriously injured

**Good** - All SHEMS/OSHA controls and policies are in place

**Lucky** - Missing a SHEMS/OSHA control or policy



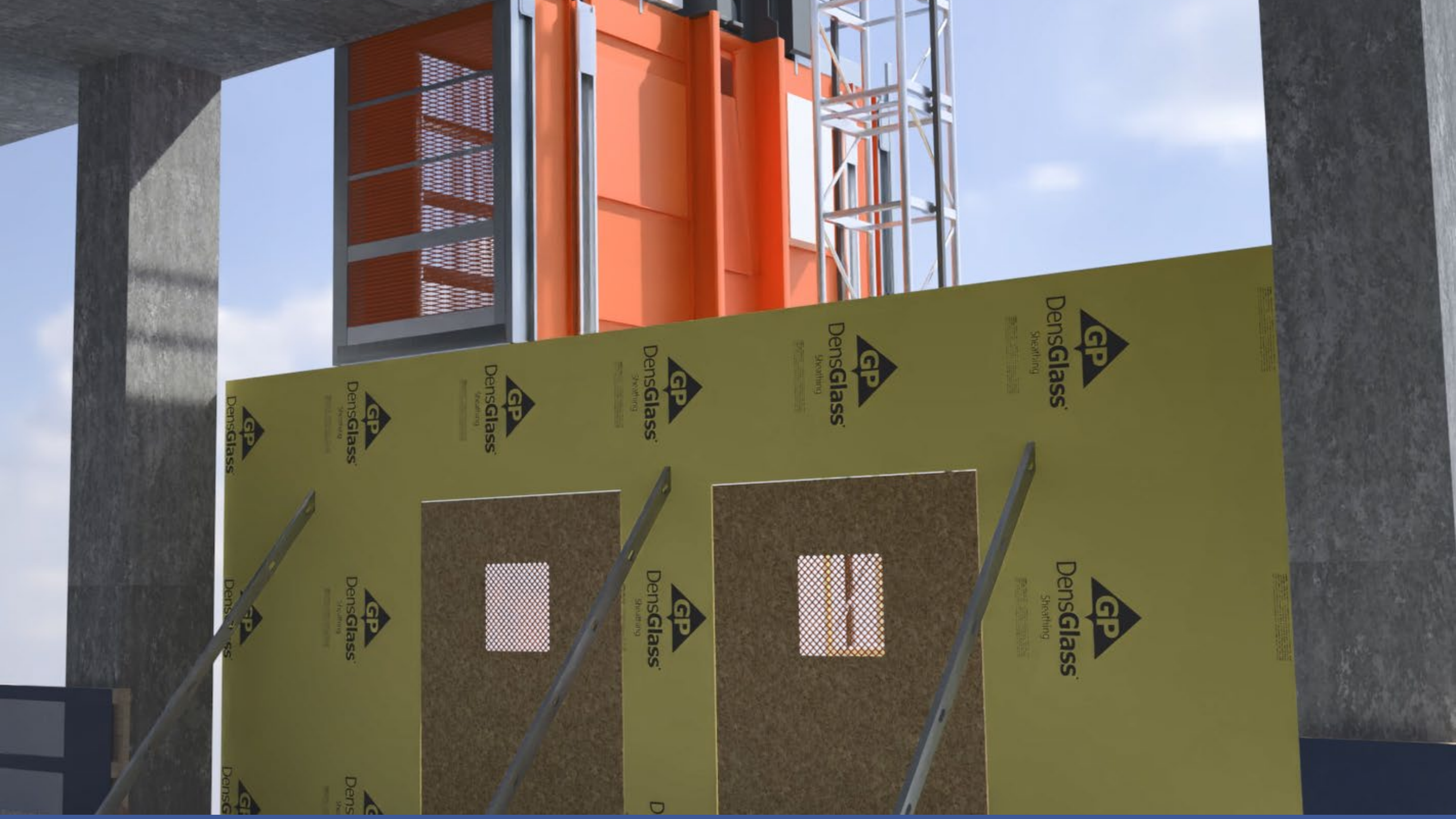
# Correlation that matters



\*Conklin







DensGlass<sup>®</sup>  
Sheeting



DensGlass<sup>®</sup>  
Sheeting



DensGlass<sup>®</sup>  
Sheeting



DensGlass<sup>®</sup>  
Sheeting



DensGlass<sup>®</sup>  
Sheeting



DensGlass<sup>®</sup>  
Sheeting



DensGlass<sup>®</sup>  
Sheeting



DensGlass<sup>®</sup>  
Sheeting



DensGlass<sup>®</sup>  
Sheeting



DensGlass<sup>®</sup>  
Sheeting



DensGlass<sup>®</sup>  
Sheeting







