

24TH ANNUAL



24TH LCI CONGRESS
OCTOBER 18-21

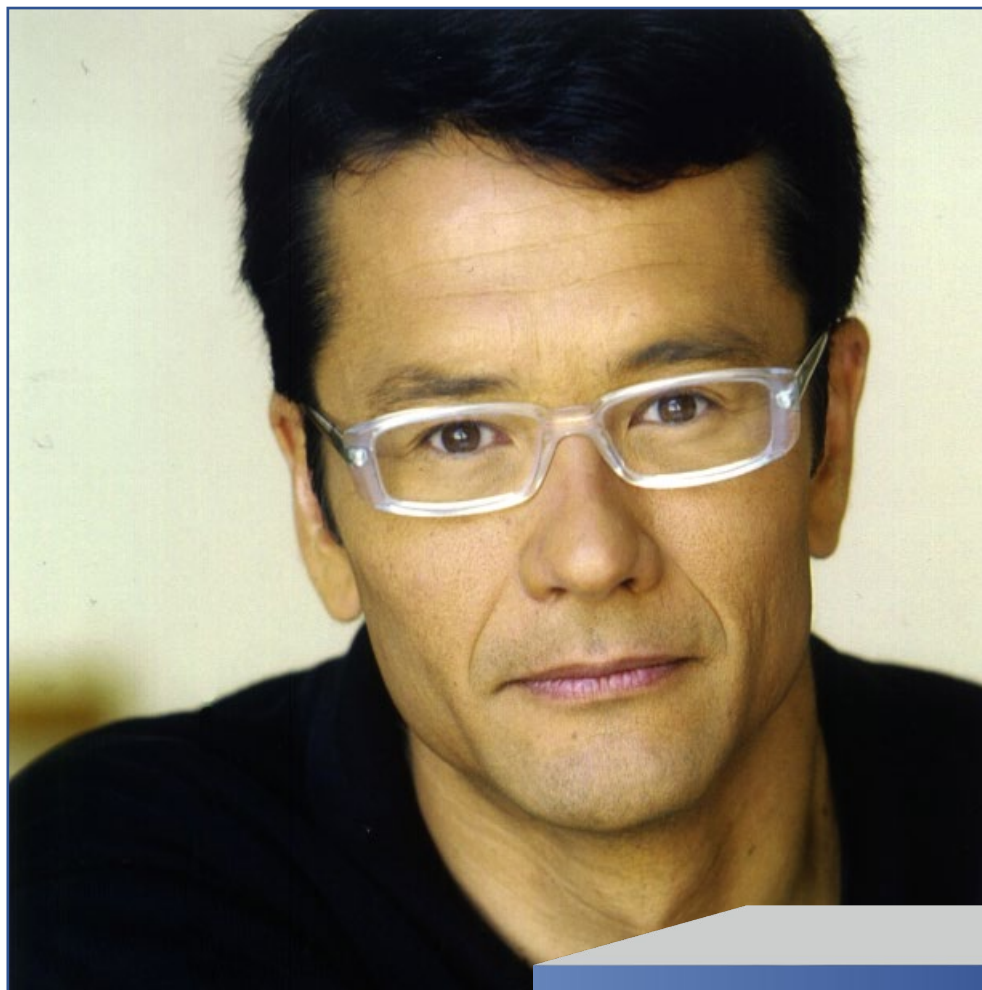
LCI Board Chair Welcome

Stan Chiu, Gensler

LEAN GUMBO: THE RIGHT INGREDIENTS FOR PROJECT SUCCESS

October 20, 2022





STAN CHIU
Director of Healthcare
Gensler





24TH LCI CONGRESS
OCTOBER 18-21, 2022

Congress Theme Brainstorming Cloud

Opportunities

Pain Points

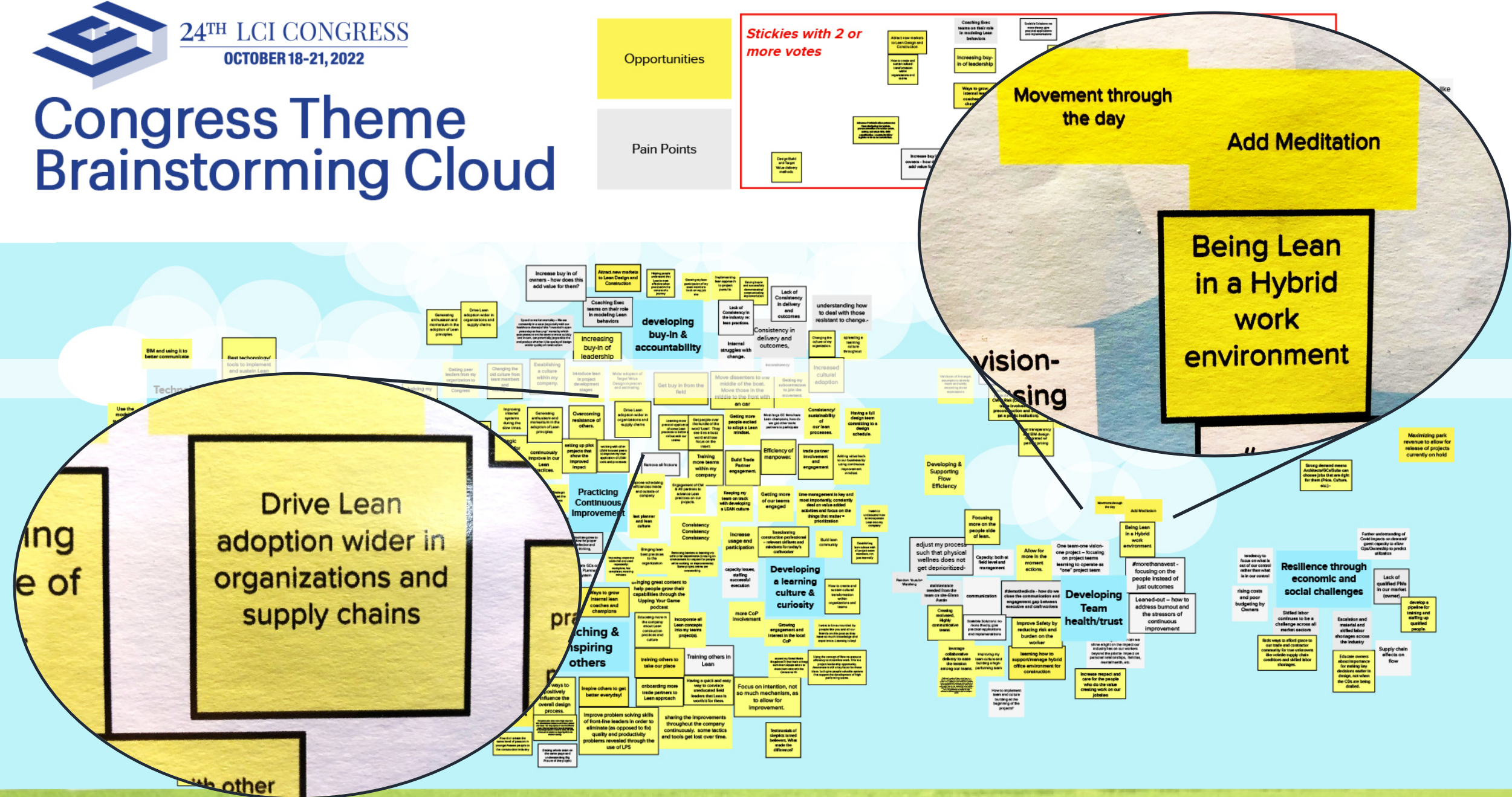
Stickies with 2 or more votes

Defining tracks first feels like the theme is "Making Congress All About You (the attendee)" Love the idea.





Congress Theme Brainstorming Cloud



Recognizing Companies with a Strong Commitment to LCI and Lean

27 Companies have sent 10 -19 attendees to 2022 Congress: (as of Oct. 18)

- Aecon Construction Group (14)
- Barton Malow Company (12)
- Bilfinger Industrial Services (11)
- Blattner Energy (10)
- Brasfield & Gorrie (15)
- Burns & McDonnell (10)
- Clark Builders (10)
- CRB Builders (17)
- Daniel O'Connell's Sons (12)
- Dome Construction (19)
- DPR Construction (18)
- Fluor (10)
- Herrero Builders, Inc. (17)
- HGA (11)
- Integrated Project Services, LLC (16)
- Jacobs Engineering (14)
- JPI Companies (10)
- Landis Construction (13)
- Procter & Gamble (11)
- Skanska USA Building (15)
- SSOE Group (11)
- Stantec (12)
- Swinerton Construction (16)
- Tulane University (10)
- Turner Construction Company (15)
- UCSF Capital Programs (10)
- Whiting-Turner Contracting Company (19)

Recognizing Companies with a Strong Commitment to LCI and Lean

9 Companies have sent 20 or more attendees to 2022 Congress: (as of Oct. 18)

- **Alberici Corporation (22)**
- **The Boldt Company (32)**
- **Broadmoor LLC (25)**
- **Core Construction (22)**
- **Gilbane Building Company (21)**
- **JE Dunn Construction (33)**
- **KHS&S Contractors (24)**
- **Southland Industries (28)**
- **Woodward Design+Build (23)**

LCI National Update

Today's discussion in overview:

- *LCI Mission and Vision*
- *Guiding Principles*
- *OKR Process & 2022 Objectives/Key Results*



LCI National Update

MISSION:

To lead the building industry in transforming its practices and culture

VISION:

A healthy and thriving building industry delivering outstanding project outcomes every time for everyone



LCI National Update

Four Guiding Principles:

1- Inclusion

We believe the best results are achieved through the collective efforts of diverse teams that foster shared decision-making and psychological safety.

2- Transparency

We are open, honest, empathetic, and straightforward in our dealings with our members, customers, stakeholders and one another.



LCI National Update

Four Guiding Principles, cont'd:

3- Service

We meet people where they are, listen to understand, help them learn by doing and support them on their journey.

4- Courage

We tackle the most important issues and refuse to shy away from challenges.



LCI National Update

Two National Objectives 2021-25:

1. Grow awareness around Lean as it applies to Design and Construction

Key results:

- *1M annual visitors to LCI website (with engagement tracked on the site)*
- *Growth in Congress attendance, CoP attendance, and LCI membership*
- *Annual survey to gauge level of awareness nationally, track year-over-year to gauge progress*

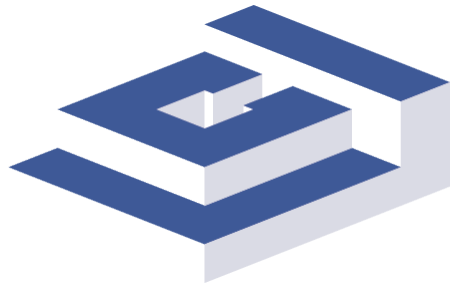


2. Drive Lean processes and principles deep into individuals, teams and organizations within our industry.

Key Results:

- *Create and implement individual certification program accepted by owners (e.g., part of RFQ process) and measuring its results.*

LCI Supports Construction Inclusion Week Oct. 17-21



**Lean
Construction
Institute**

Transforming Design and Construction



**Construction
Inclusion Week**

Building the Foundation for Inclusion

- Day 1 – Commitment & Accountability
- Day 2 – Belonging
- Day 3 – Supplier Diversity
- Day 4 – Workplace Culture
- Day 5 – Community Engagement

#LCICongress22

#ConstructionInclusionWeek

LCI Equity Diversity and Inclusion Initiative

- Lean Gumbo – The Right Ingredients for Project Success
 - New Orleans: Melting Pot, Birthplace of Jazz
 - (Distinctively American Blends)
 - Lean Parallels with a Jazz Ensemble
- Inclusion Drives Innovation and Performance
- Cross Functional Teams and Collaboration
- LCI Advocating Inclusion at the Board Level



LCI Board Diversity & Inclusion Outcomes

D&I stats on LCI board membership

	Wh. Males	Females	POCs	Chair/V. Chair
2019	12 (75%)	2 (12.5%)	2 (12.5%)	F/M
2020	11 (71%)	3 (12.5%)	2 (12%)	M/F
2021	11 (65%)	4 (23%)	2 (12%)	F/POC
2022	8 (50%)	5 (31%)	3 (18%)	POC/POC
2023*	7 (41%)	7 (41%)	4** (18%)	POC/F

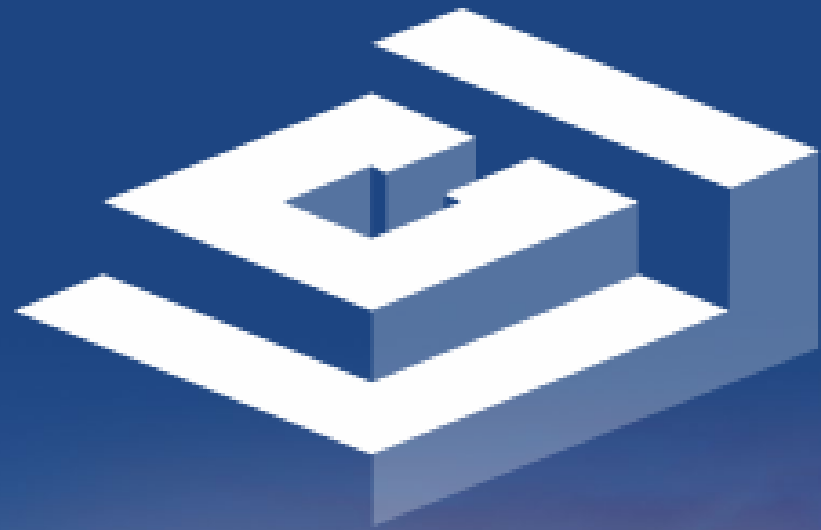
F=female

M=male

POC = people of color

***Projected**

**** (Incl. 1 female)**



24TH LCI CONGRESS

OCTOBER 18-21

