

23RD ANNUAL



23RD LCI CONGRESS
OCTOBER 19-22

TH5A: The Evolution of the Co-Location: Improved For Every Project

Keith Sunderman, Penn State Health

Scott Mull, Barton Malow Builders

Emily Lowe, Alexander Building Construction

LEARN BY DOING FROM THOSE WHO DO

October 21, 2021

Health precautions to keep everyone as safe as possible at Congress:

- Wear masks at all times in indoor events.
- Complete your daily health screening on your phone and bring it with you when you enter the center each day.
- Practice social distancing to the extent possible. Seating at plenary sessions is being structured to help with this.
- If you feel ill at any time, please leave the conference and return to your room/consult a physician as necessary.
- Ultimately, our collective health and safety at Congress is up to all of us. Thanks for your support!



Problem Statement

*As we continue to push forward with advancements in technology and innovation, it is increasingly clear that **successful teams** must be willing to embrace and cultivate an expanded resource base and capitalize on the benefits of knowledge-sharing from their diverse team of experts.*

TRADITIONAL PROJECT	LEAN PROJECT
DELIVERY METHOD	
<ul style="list-style-type: none">• Siloed approach• Lack of communication• Missed opportunities for increased collaboration efforts	<ul style="list-style-type: none">• Increased communication and collaboration opportunities• Optimization of the benefits of Lean Tools and Techniques



Learning Objectives

1. WHAT IS A CO-LOCATION?

- Understanding the co-location as both a Lean TOOL and a Lean TECHNIQUE

2. UNDERSTANDING THE VALUE OF A CO-LOCATION

- Investment perspective

3. THE EVOLUTION OF THE CO-LOCATION – SPECIFIC TO OUR PROJECT HISTORY

- Realizing the value of continually improving the co-location through each iteration
- Evolution does not always equal continuous improvement

4. HOW TO DETERMINE IF A CO-LOCATION IS RIGHT FOR YOUR PROJECT

- Analyzing your project needs – does my project need a co-location?
- Getting started – first steps



Continuous
Improvement

What is a Co-Location?



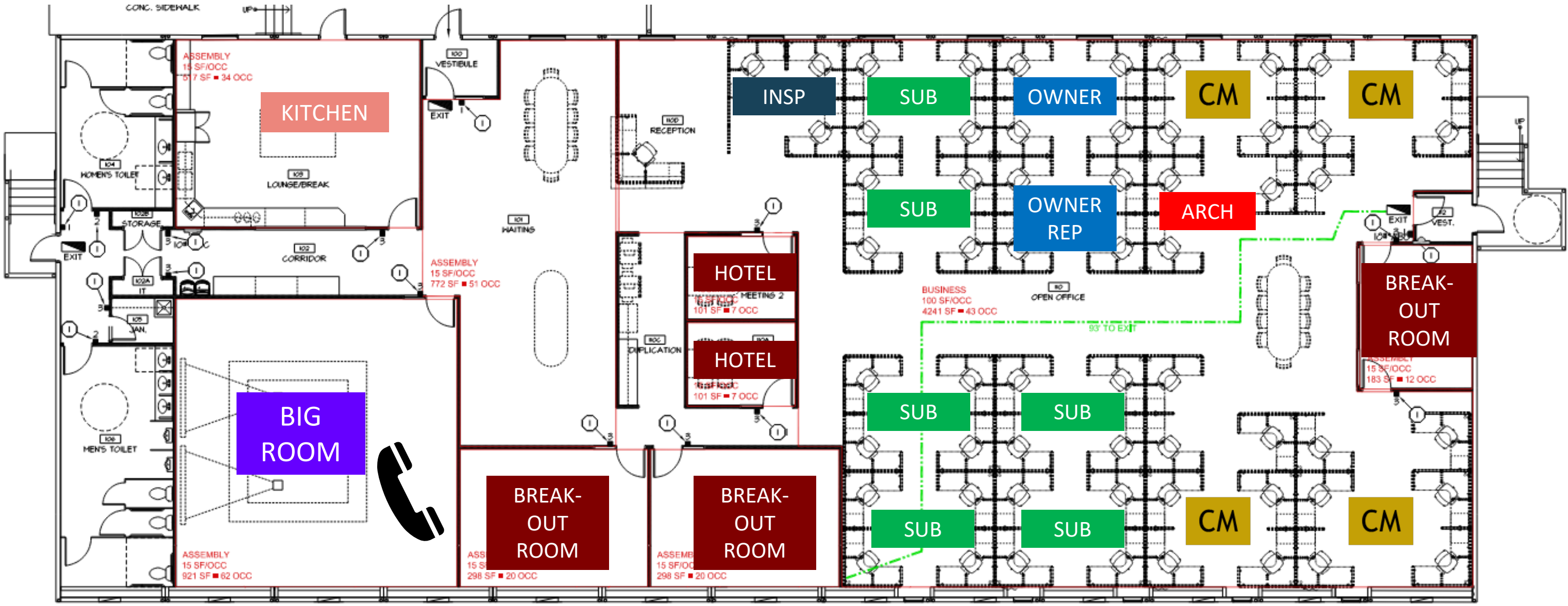
What Is A Co-location?

A **physical building on the project site** where the key decision-makers of the project management team work during the project delivery process



CO-LOCATION FLOOR PLAN

60' X 156' 13-Plex





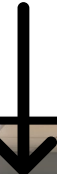
**VALUE IN HAVING A
“HEADQUARTERS” FOR THE
TEAM TO COLLABORATE**

**SHARED
RESOURCE**

- BIG ROOM
- CLUSTER GROUPS
- VISUAL MANAGEMENT



HOW DO WE GO FROM THIS...

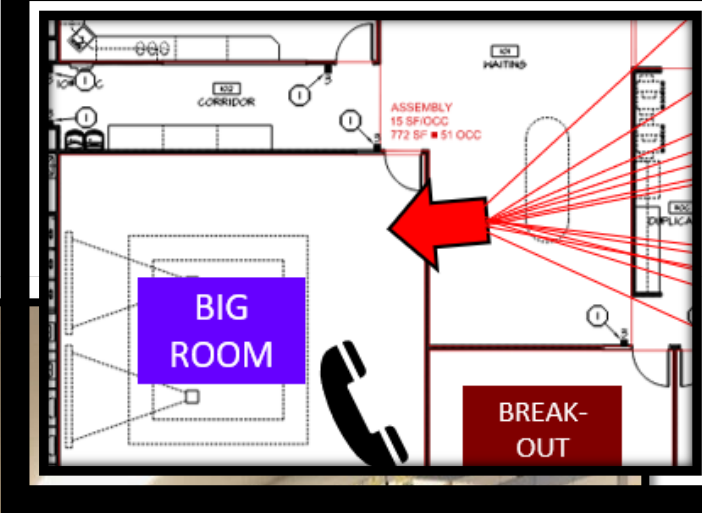


BIG ROOM

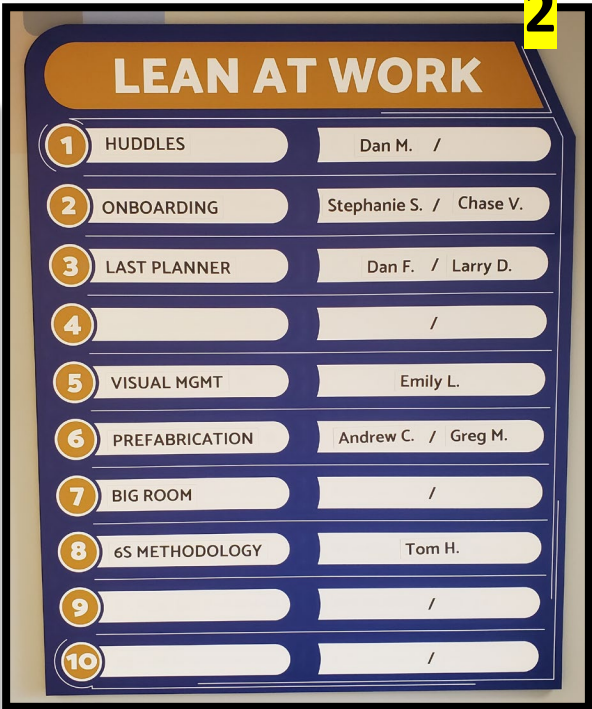
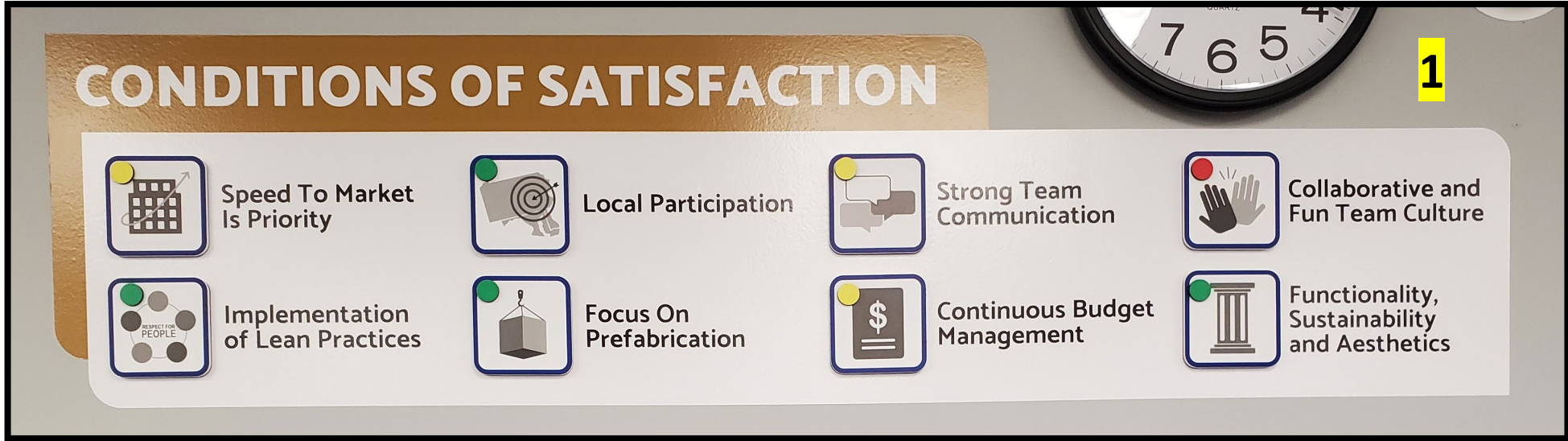
...TO THIS?



BIG ROOM ENVIRONMENT







LEAN AT WORK		
1	HUDDLES	Dan M. /
2	ONBOARDING	Stephanie S. / Chase V.
3	LAST PLANNER	Dan F. / Larry D.
4		/
5	VISUAL MGMT	Emily L.
6	PREFABRICATION	Andrew C. / Greg M.
7	BIG ROOM	/
8	6S METHODOLOGY	Tom H.
9		/
10		/

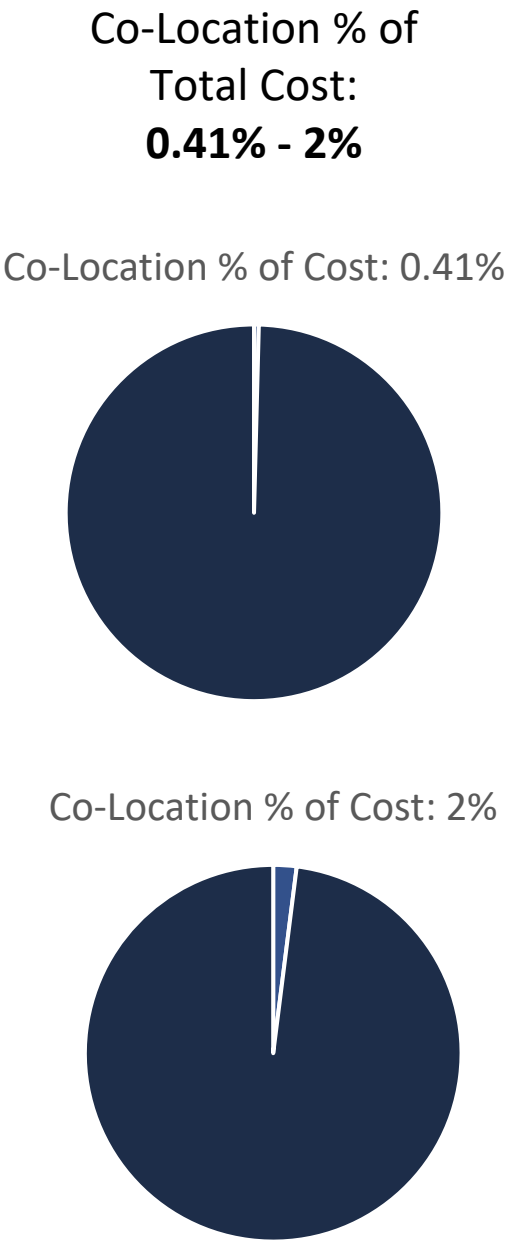
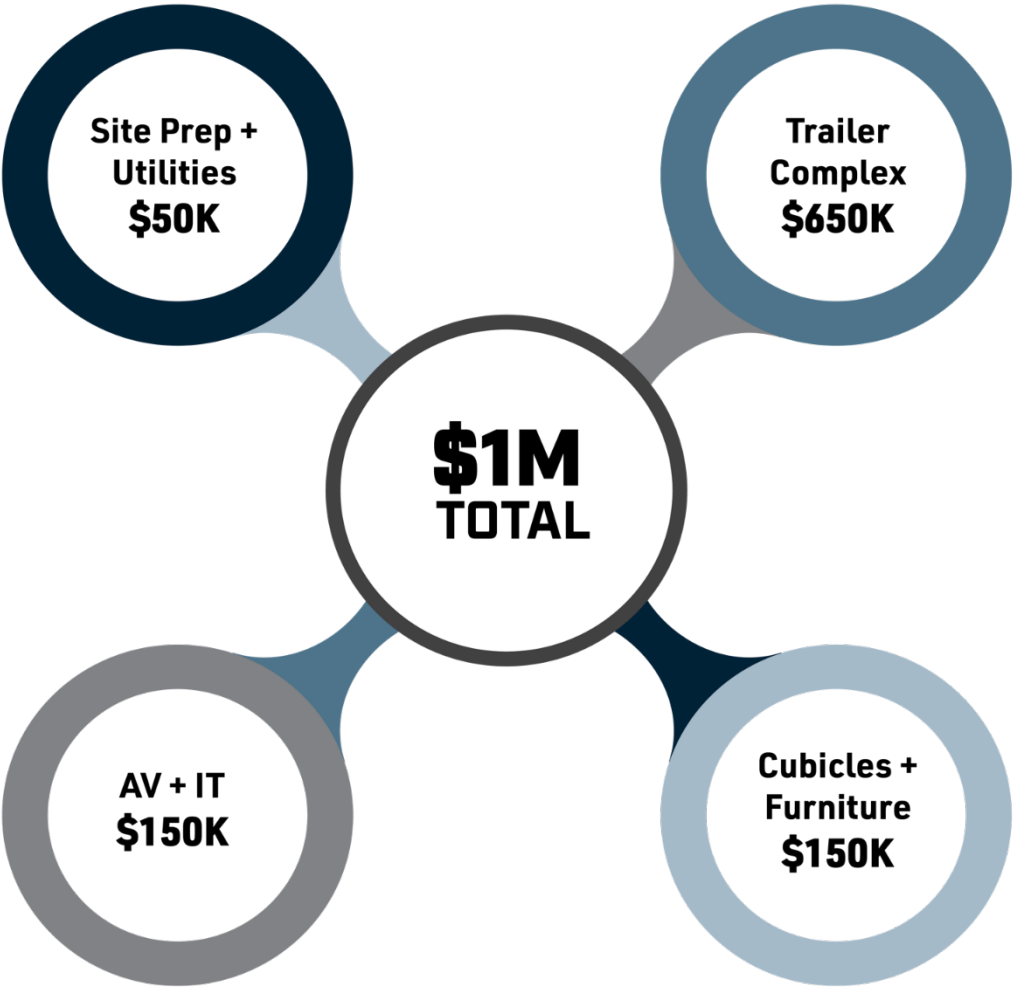
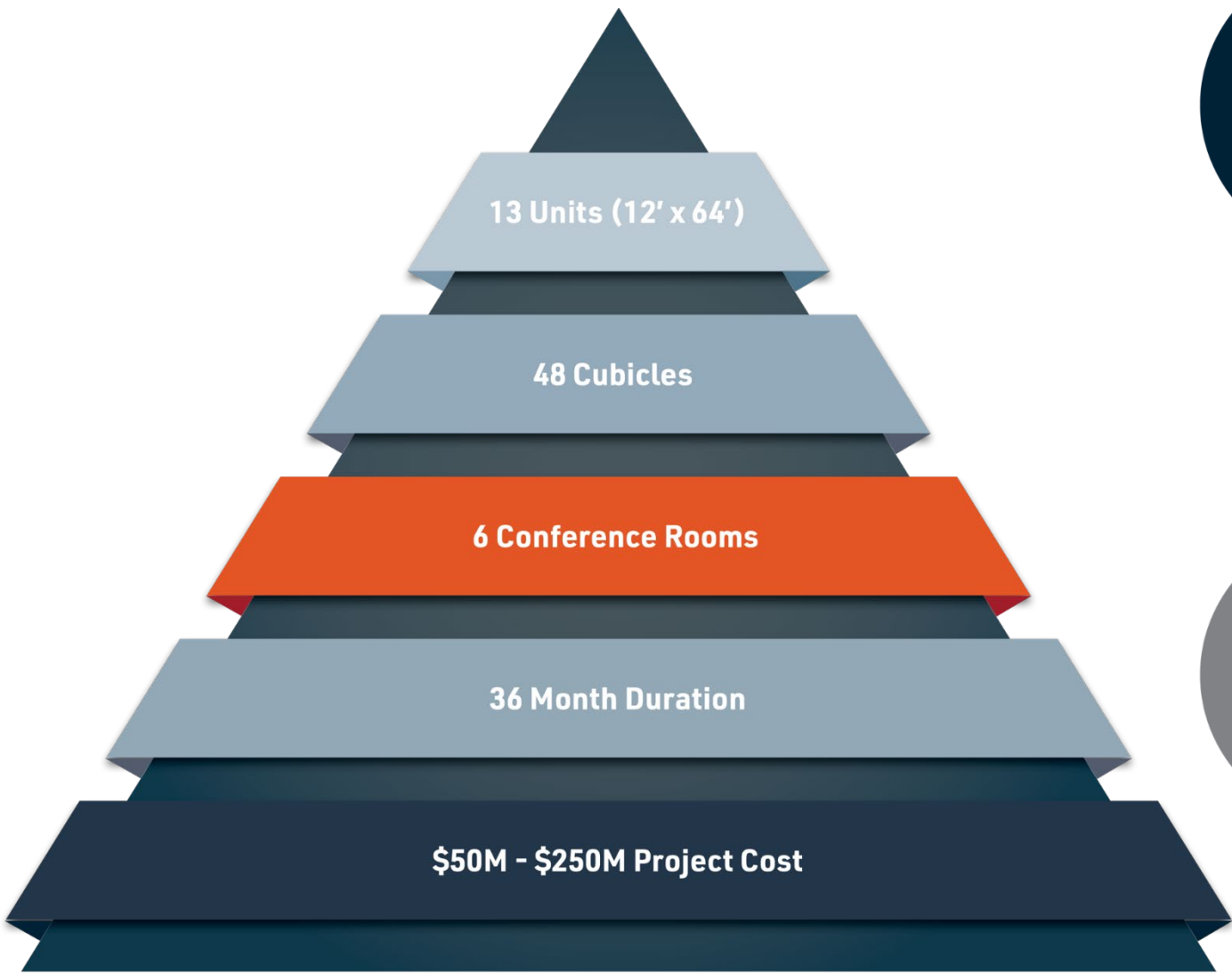




How much does a Co-location cost?

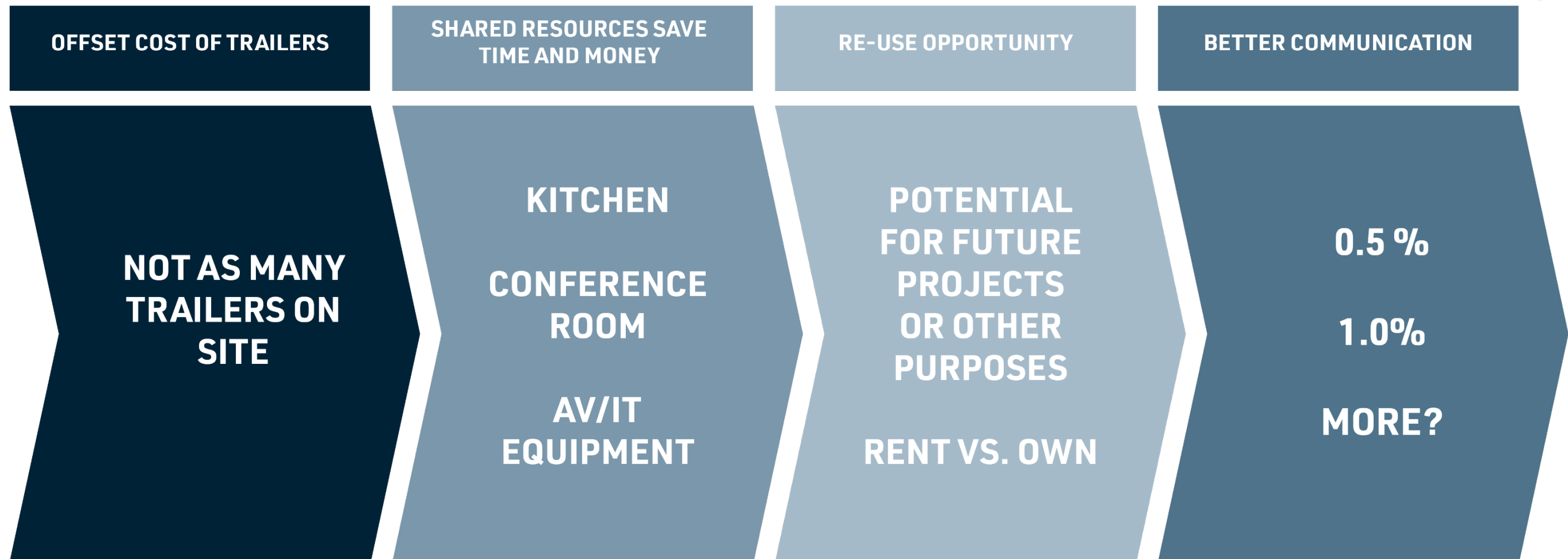


How Much Does It Cost?



**Average cost of 3 recent projects*

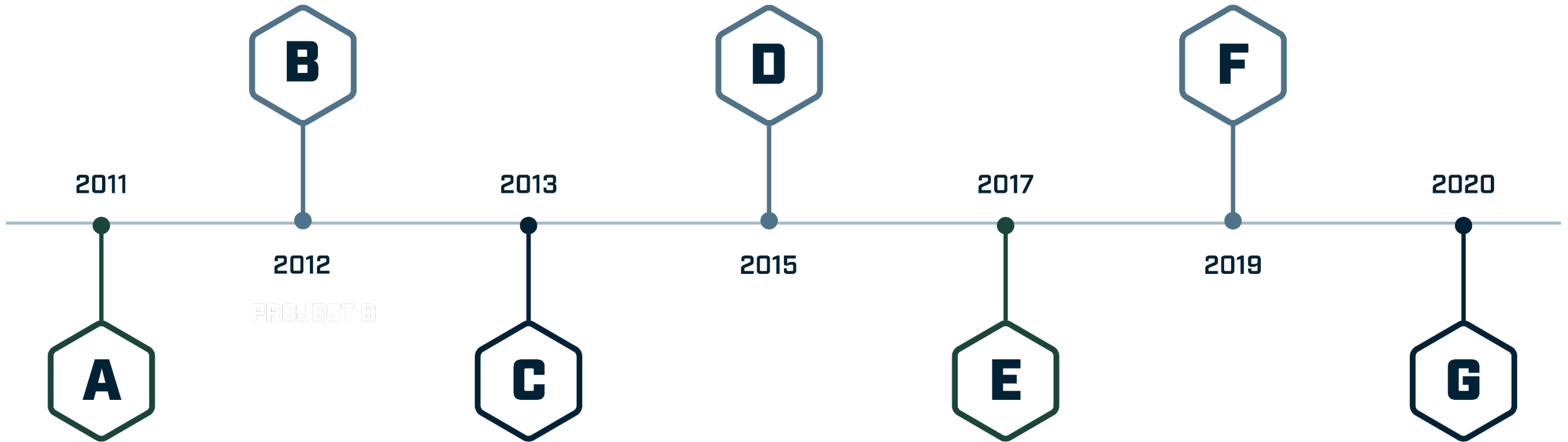
How Much Does It Save?



Co-Location Examples – Understanding the Evolution



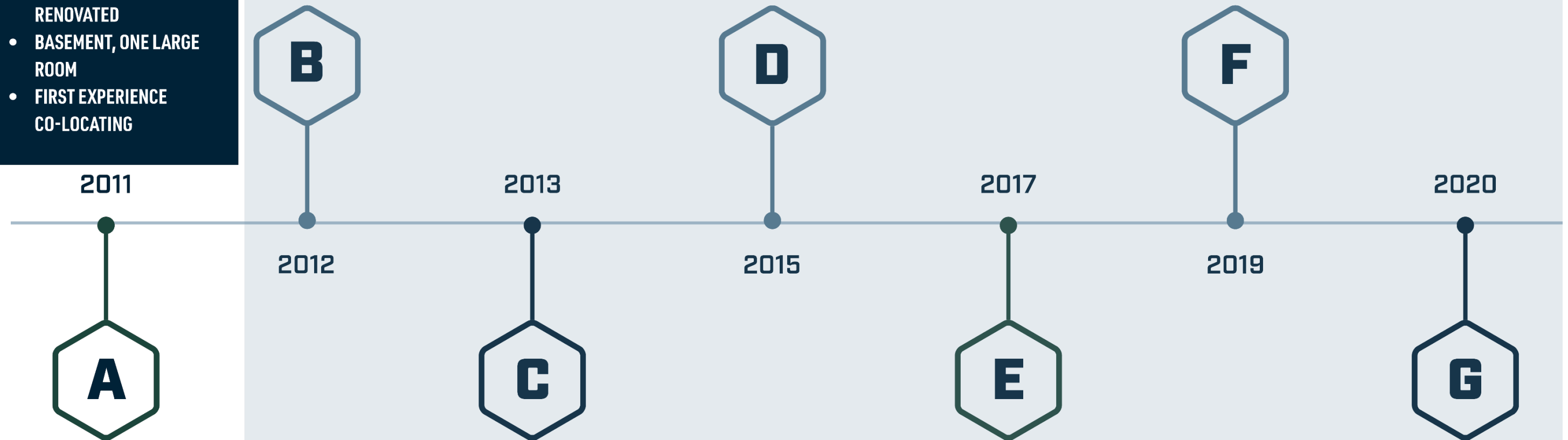
Colocation Examples - Evolution



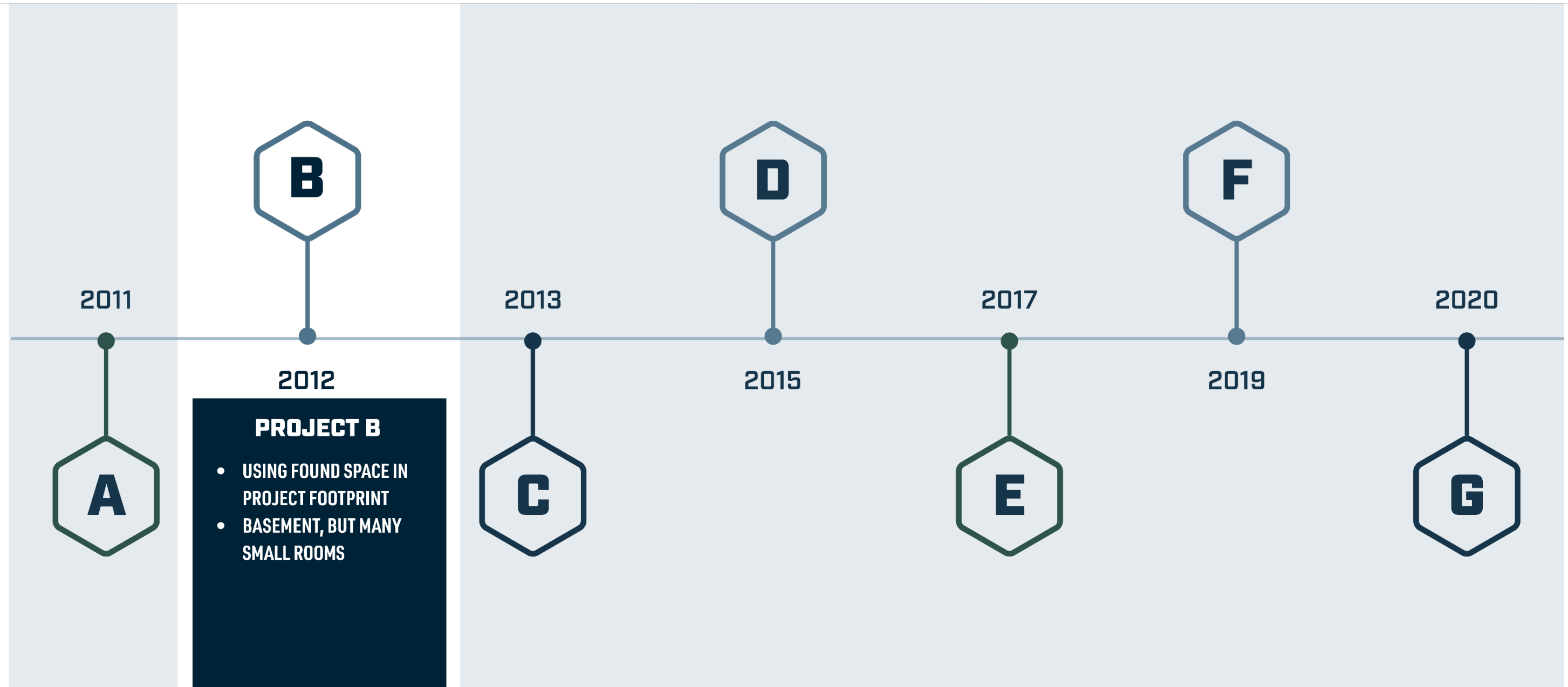
Colocation Examples - Evolution

PROJECT A

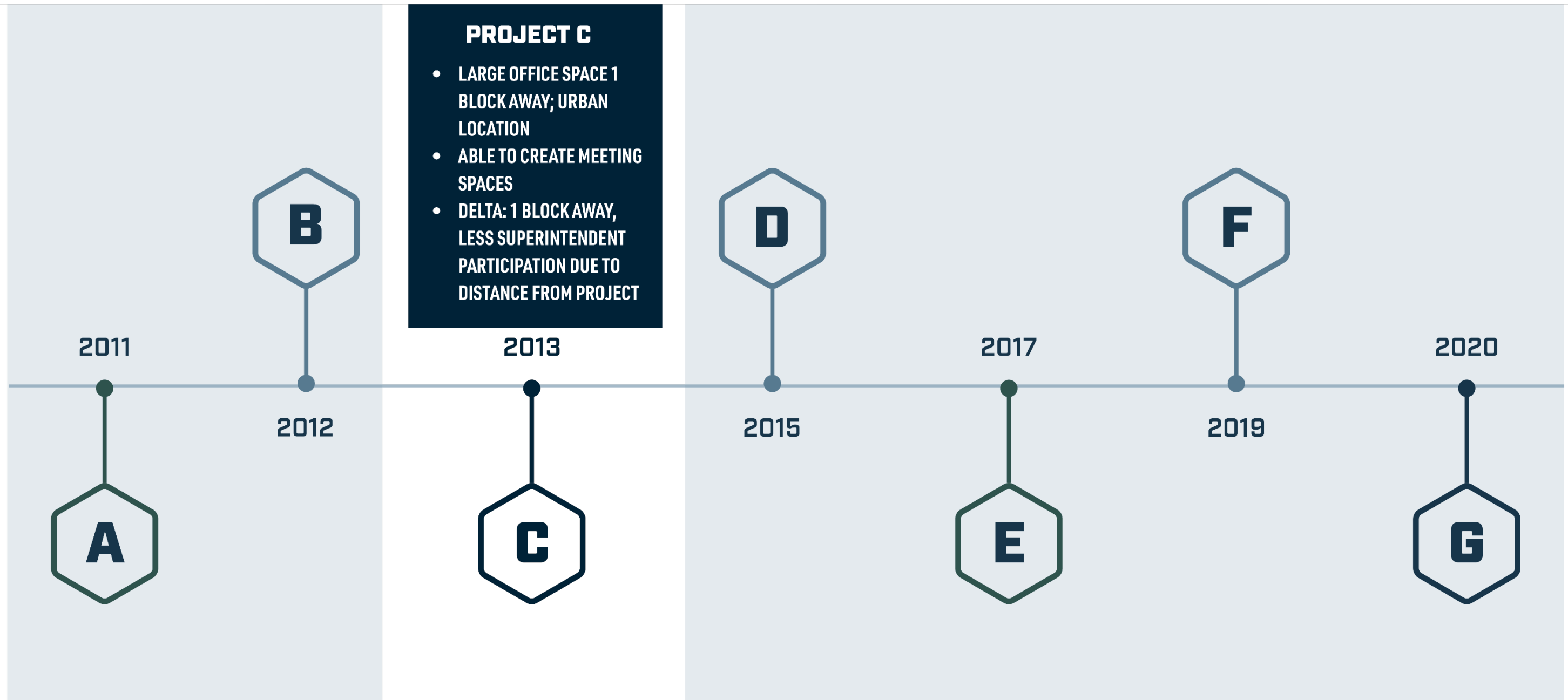
- BORROWED SPACE NEXT TO LARGE COMPLEX BEING RENOVATED
- BASEMENT, ONE LARGE ROOM
- FIRST EXPERIENCE CO-LOCATING



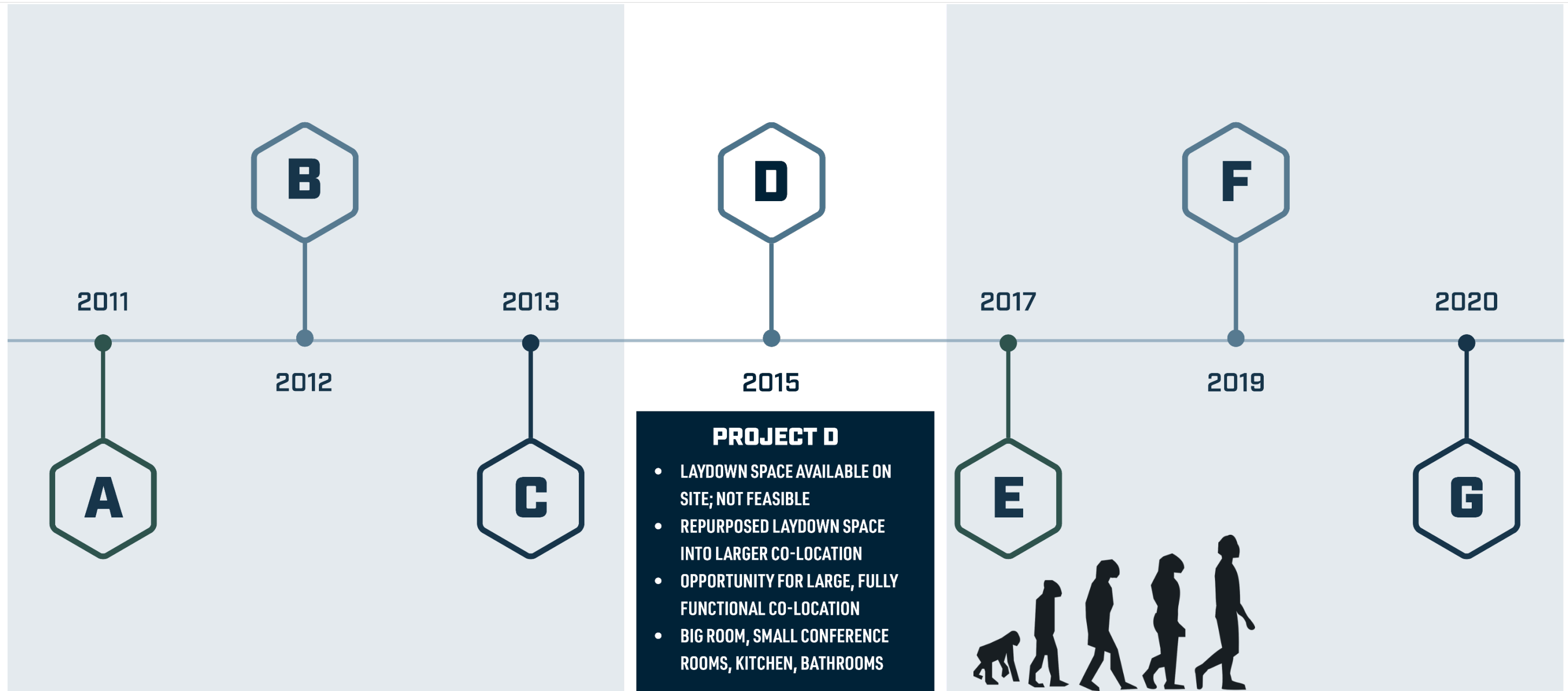
Colocation Examples - Evolution



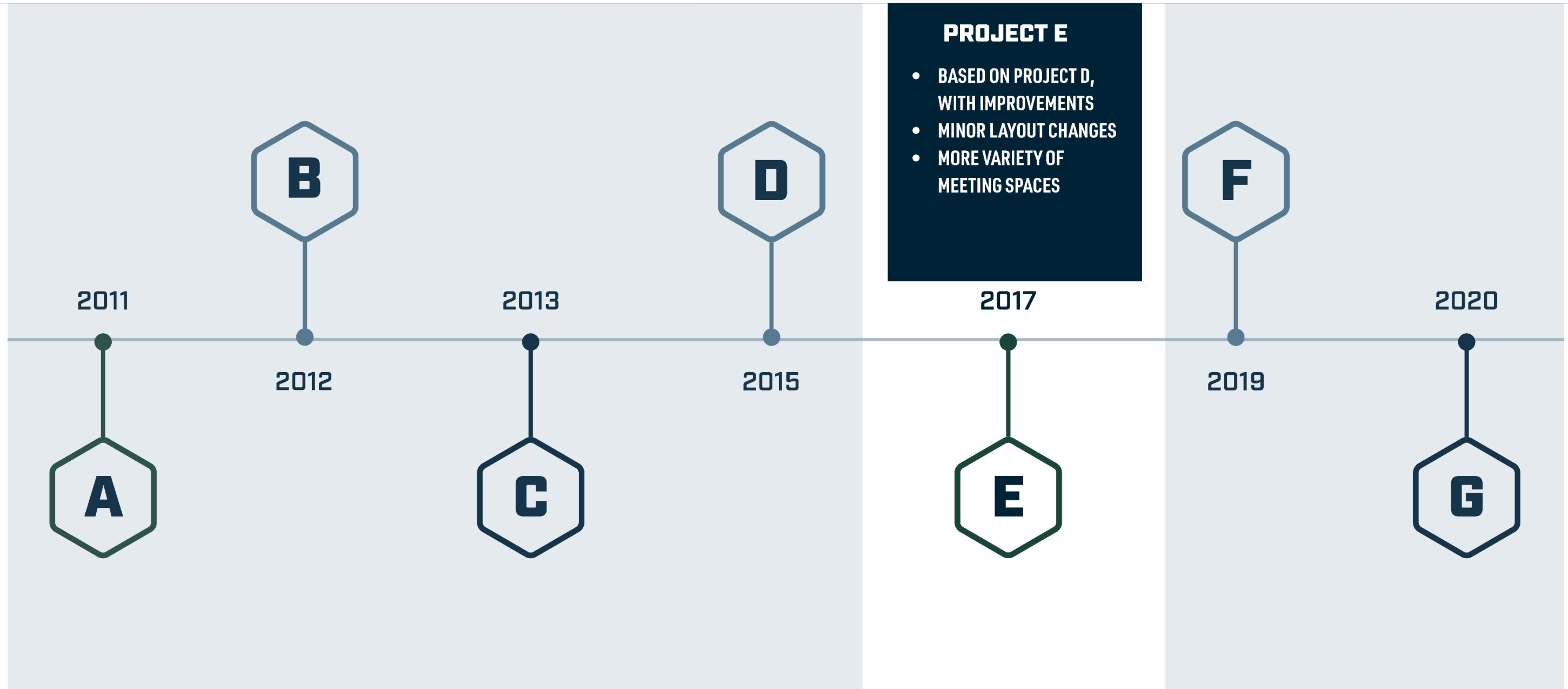
Colocation Examples - Evolution



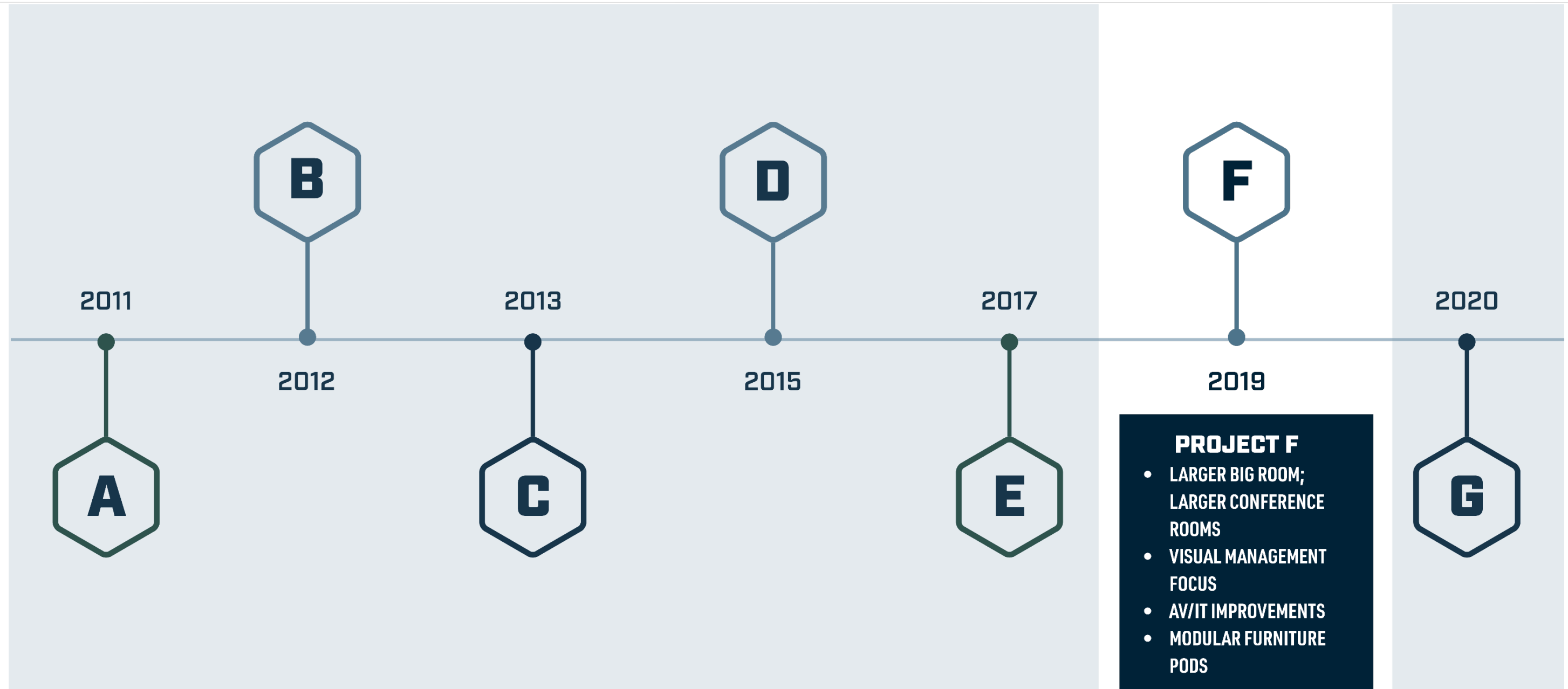
Colocation Examples - Evolution



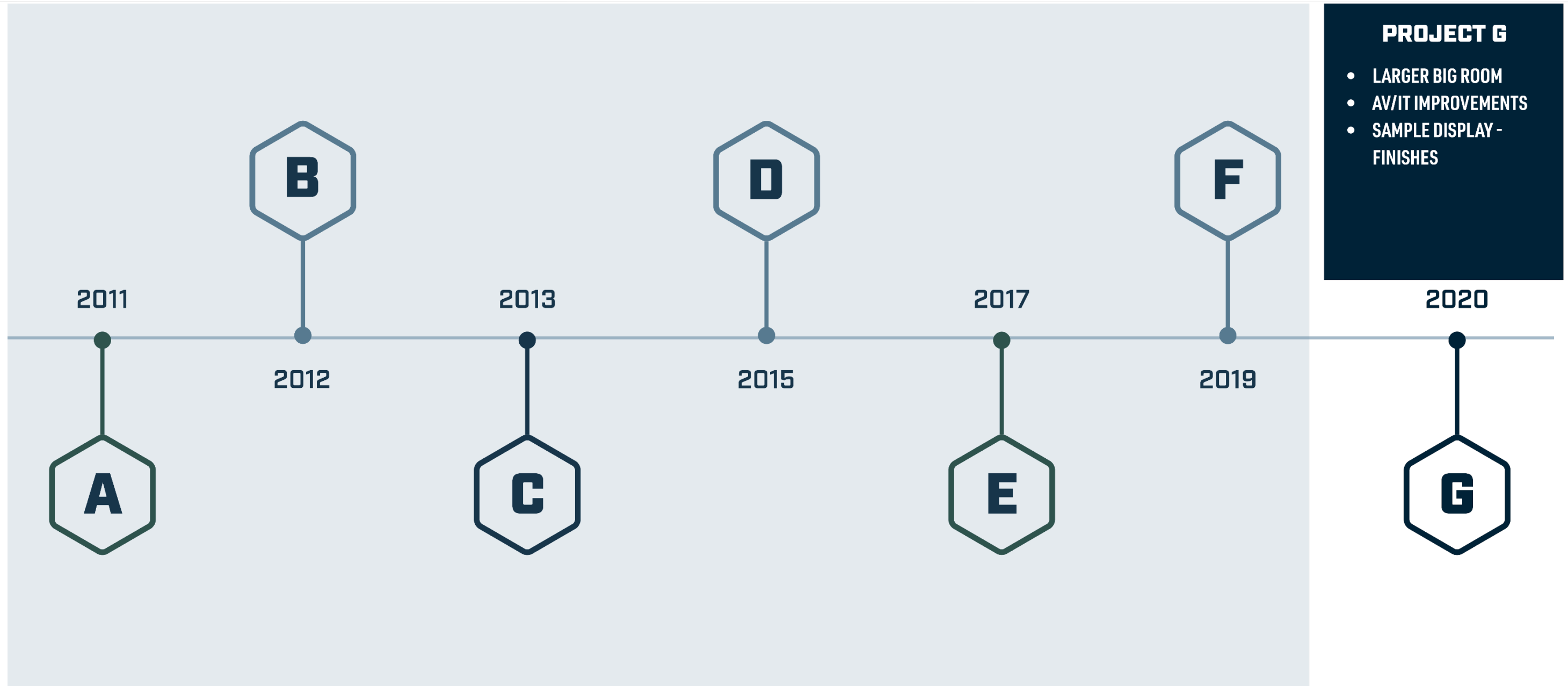
Colocation Examples - Evolution



Colocation Examples - Evolution



Colocation Examples - Evolution



How do I decide if a Co-Location is right for my project?



Co-Location On Your Project

Is it needed?

- Complex Project?
 - Collaborative Communication?
 - Quick decision making?



Getting Started

First Steps

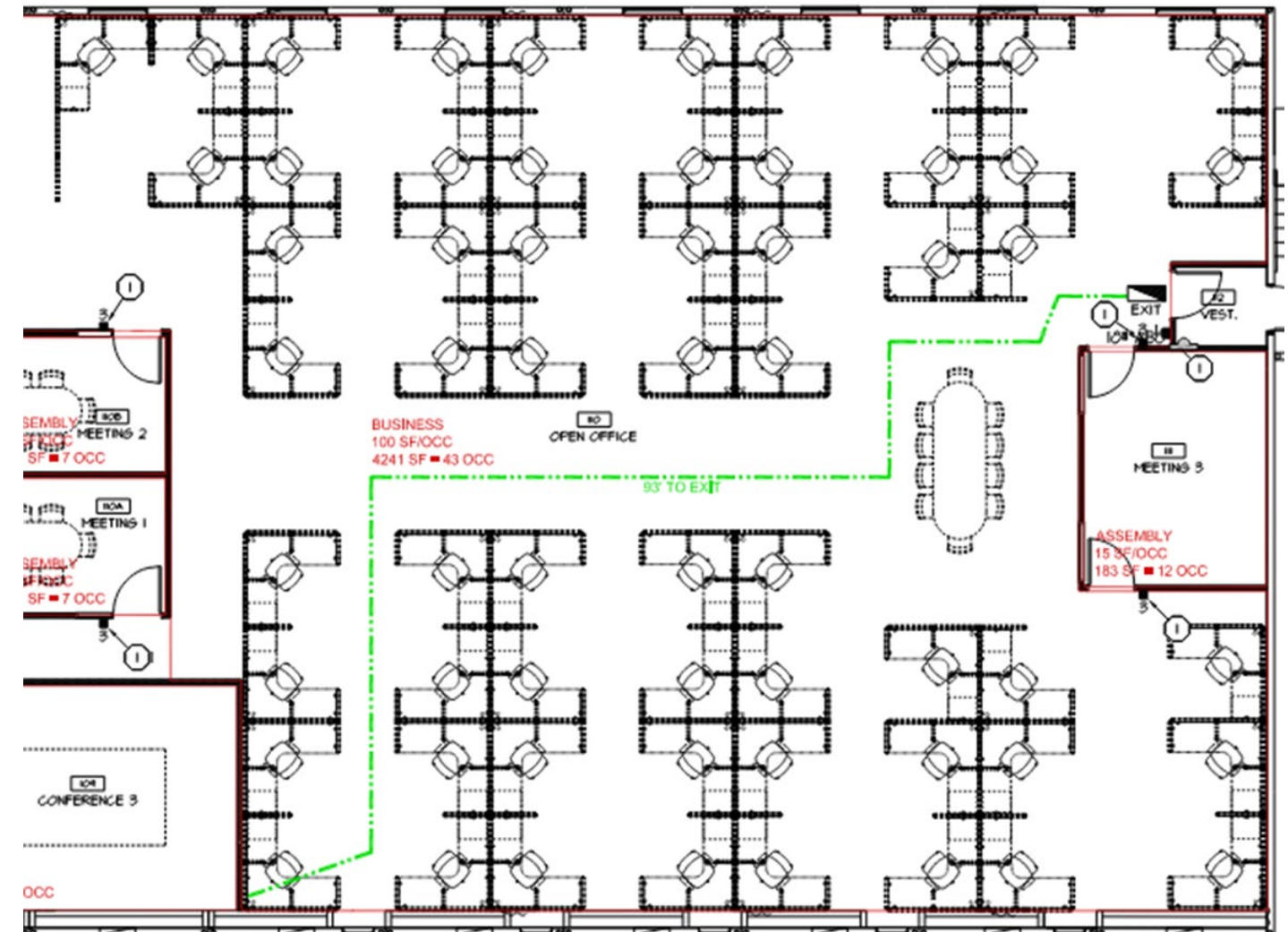
1. Gaining Buy-In
 - From the Owner
 - From Key Stakeholders
2. Setting The Precedence
 - First Impressions
 - Level of Professionalism



Getting Started

3. Reviewing the schedule for size needs

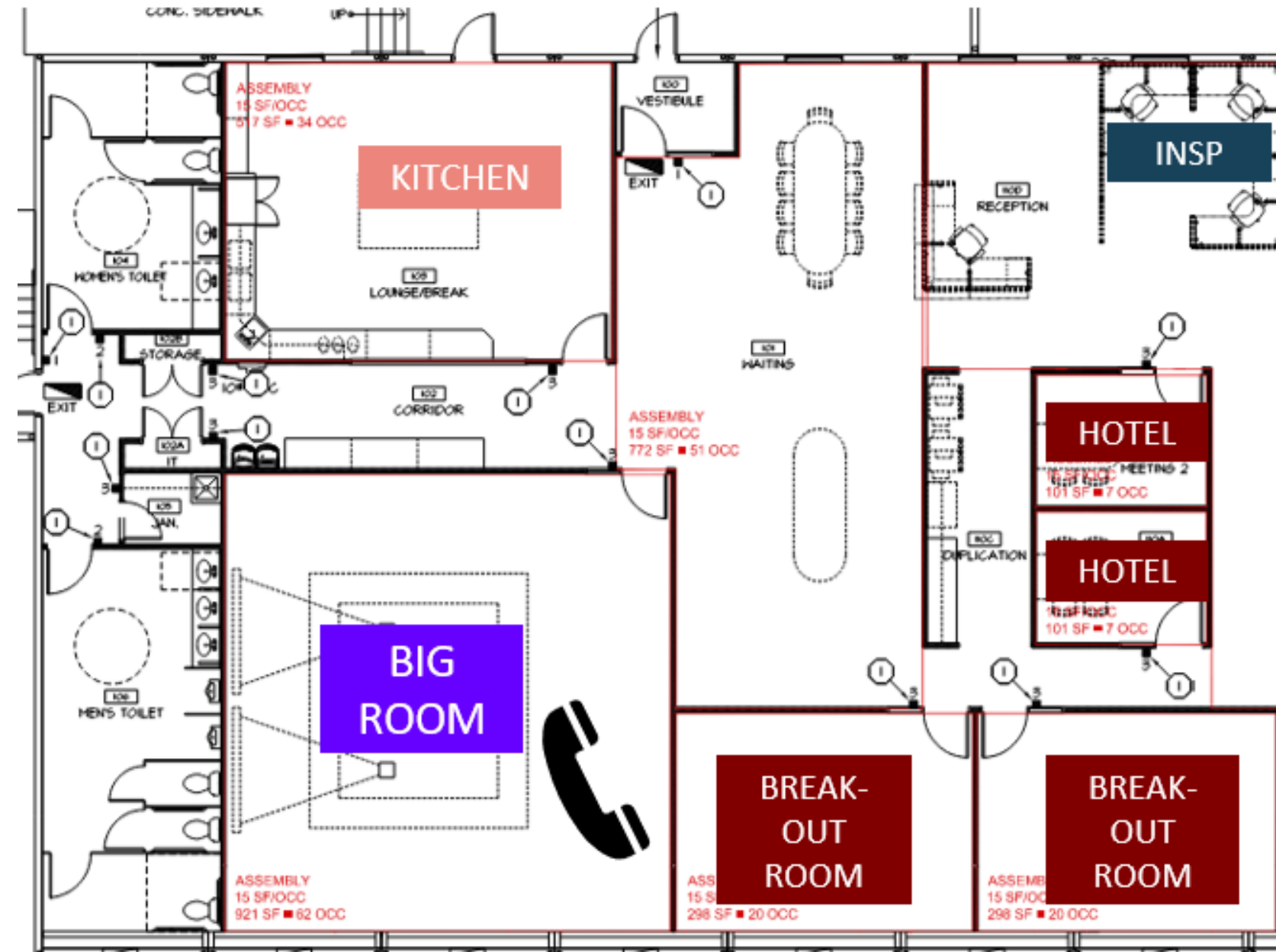
- Space for Key Decision-Makers
- Can seats be reused?
- No private offices



Getting Started

4. Equipping the TOOL

- Collaboration Spaces
- Big Room
- Smaller Conference Rooms
- Breakout Rooms
- Kitchen Area
- Restrooms
- Plan Table Area
- Wall Space for Huddle Boards and Visual Management



Key Takeaways



KEY TAKEAWAYS – APPLYING THIS TOMORROW

1. A CO-LOCATION IS A LEAN TOOL AND A LEAN TECHNIQUE

- TOOL: Physical building is a resource to be used by the Team
- TECHNIQUE: Fosters an environment where a collaborative culture can grow

2. UNDERSTANDING THE VALUE OF A CO-LOCATION

- More than just the cost
- Investment upfront for better experience throughout

3. PDCA – IMPROVING FUTURE ITERATIONS OF THE CO-LOCATION

- PDCA: Plan – Do – Check - Adjust

4. DECIDING IF A CO-LOCATION IS RIGHT FOR YOUR PROJECT

- Analyzing your project needs
- Getting started – first steps



Continuous
Improvement



23RD LCI CONGRESS
OCTOBER 19-22



In the spirit of continuous improvement, we would like to remind you to complete this session's survey! We look forward to receiving your feedback.

Contact Us

Keith Sunderman

Penn State Health

ksunderman@pennstatehealth.psu.edu

Scott Mull

Barton Malow Builders

Scott.Mull@BartonMalow.com

Emily Lowe

Alexander Building Construction

Emily.Lowe@Butz.com

Q & A?



23RD LCI CONGRESS
OCTOBER 19-22

Thank you for attending this presentation. Enjoy the rest of
the 23rd Annual LCI Congress!